

---

# LUCAS COUNTY MHRSB DANI'S PLACE

## FURNITURE SPECIFICATIONS



# GENERAL INFORMATION

---

Furniture and Representative information is included for information gathering purposes only.

Pages that have the note "or equal" are furniture pieces that can have substitutions presented with the approval of the designer. All other furniture can have substitutions presented with the approval of the designer.

When submitting substitution requests for desks a 3D rendering is required to best communicate design and components.

All images shown are for reference only.

# REP. CONTACT

---

**Designtex:**

Trisha Roe Keel / troekeel@designtex.com  
513. 800. 2418

**Pallas/KI:**

Caroline O'Donnell / caroline.odonnell@ki.com  
614.996.2199

**Posh/Luum/Rouillard:**

Elle Neyland / elle@elianalauren.com  
513.680.3553

**Momentum:**

Danielle Cremeans / dcremeans@momtex.com  
740.334.2512

**Knoll Textiles/Maharam:**

Jacob Kirby / jkirby@maharam.com  
404.909.8451

**Wolf Gordon:**

Natalie Knezevic / natalie.knezevic@wolfgordon.com  
502.200.3762

**Arc-Com:**

Collette Gallagher / cgallagher@arc-com.com  
440.865.9509

**Carnegie:**

Belinda Binford / belinda@danbinford.com  
513.310.6696

**SitOnIt/JSI:**

Lauren Carbaugh / lauren@blgreps.com  
614.787.5795

**Andreu World:**

Steve & Christine Groh / sgroh@grohcr.com, cgroh@grohcr.com  
513.683.8282

**Spec/Integra:**

Trevor Cooke / dotsoncooke2@gmail.com  
614.778.9019

**Kwalu:**

Laura Zajac / lzajac@kwalu.com  
313.520.5482

**Stance/Plural::**

Gerald Shannon / gerald@thenticgroup.com  
513.227.7550

**Pineapple:**

Jeremy Parenteau  
Jeremy.Parenteau@pineapplecontracts.com  
800.496.9324

**ERG:**

Mike Steiner / mikesteinerdba@gmail.com  
614.595.4093

**Landscape Forms:**

Kendra Brown / kendrab@landscapeforms.com  
614.558.2800

**OFS:**

Cheryl Davis / cheryl@davisgroup.org  
614.496.0411

**Hightower:**

Pete D'Amico / pete@timoneilassociates.com  
614.738.9698

**Kimball:**

Kim Hart / Kim.Hart@KimballInternational.com  
614.623.7984

# UPHOLSTERY ASSIGNMENTS

---

**UPH A:** DESIGNTEX / WEND 3169-701 / COLOR: AUTUMNAL

**UPH B:** PALLAS / PANACHE 27.305.022 / COLOR: FOG

**UPH C:** POSH TEXTILES / AMAZE / COLOR: MOSS

**UPH D:** DESIGNTEX / SORANO 3404-505 / COLOR: ALOE

**UPH E:** MOMENTUM / NASHVILLE CV / COLOR: SEA SALT

**UPH F:** KNOLL TEXTILES / PRAIRIE / COLOR: FOX

**UPH G:** MOMENTUM / NASHVILLE CV / COLOR: SMOKEY

**UPH H:** MOMENTUM / LUGANO / COLOR: MONTAGE

**UPH I:** WOLF GORDON / EDEN EDN9551 / COLOR: GINGER

**UPH J:** DESIGNTEX / RIDER 3007-502 / COLOR: IVY

**UPH K:** MAHARAM / LARIAT 440401 / COLOR: 031

**UPH L:** MOMENTUM / YARNPLAY CV / COLOR: BLUESTONE

**UPH M:** MOMENTUM / POSE / COLOR: ALABASTER (NANOTEX FINISH W/  
BARRIER

**UPH N:** WOLF GORDON / BIELLA BEA6590 / COLOR: TAUPE

**UPH O:** DESIGNTEX / WEND 3169 / COLOR: TRAVERTINE 101

**UPH P:** WOLF GORDON / BIELLA GOH 33219744 / COLOR: OCHRE

**UPH Q:** ARC-COM / DELTA AC69850 / COLOR: APPLE GREEN

**UPH R:** PALLAS / LUMIERE / COLOR: PLUME 27.341.041

**UPH S:** WOLF GORDON / EDEN GOH 33867009 / COLOR: FERN

**UPH T:** WOLF GORDON / EDEN GOH 3367907 / COLOR: AEGEAN

**UPH U:** MAHARAM / MODE 466337-071 / COLOR: BACCATA

**UPH V:** KNOLL TEXTILES / PRAIRIE / COLOR: ALMOND



# UPHOLSTERY ASSIGNMENTS

---

**UPH W:** LUUM TEXTILES / DATASTORM 4125 / COLOR: 02 SILO

**UPH X:** DESIGNTEX / NOOK 3906 / COLOR: 701 YAM

**UPH Y:** CARNEGIE FABRICS / PARADE 6802 / COLOR: 4

**UPH Z:** KNOLL TEXTILES / LOOPED IN K2390 / COLOR: 4 IVY

**UPH AA:** WOLF GORDON / NAKATA / COLOR: FLAMINGO

**UPH BB:** CARNEGIE FABRICS / PANORAMA 6036 / COLOR: 3

# SEATING

---

NAC # 411-22106

LUCAS COUNTY MHR SB - DANI'S PLACE

**NAC**  
ARCHITECTURE

## FURNITURE



ITEM DESCRIPTION: TASK CHAIR

MANUFACTURER: SITONIT

PRODUCT NAME/NUMBER: AMPLIFY MESH BACK TASK  
CHAIR / 2723 B1 Y FC13 A14 B21 S0

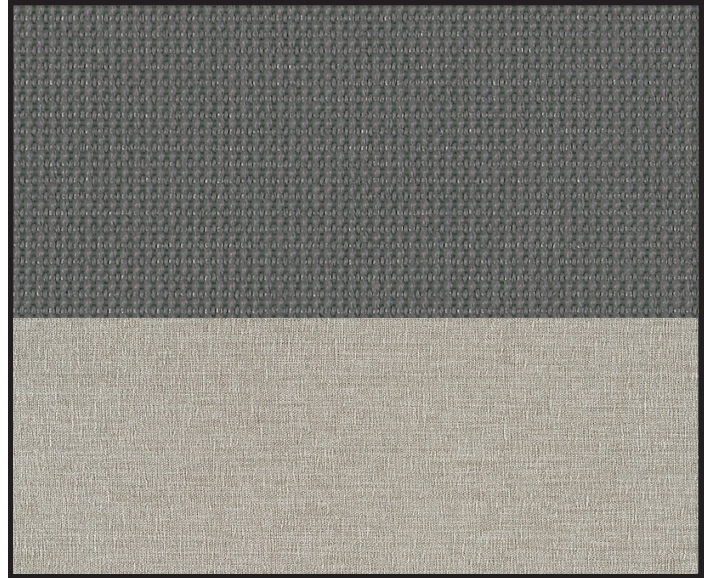
DETAILS: HIGHBACK MESH W/ ADJUSTABLE LUMBAR  
SUPPORT, ENHANCED SYNCHRO W/ SEAT DEPTH  
ADJUSTMENT, HEIGHT ADJUSTABLE ARMS, CASTERS,  
STANDARD CYLINDER

DIMENSIONS: 43"H x 27.75"-28.25"W x 24.5"D

COMMENTS:

300LBS WEIGHT CAPACITY  
PROVIDE UNIT COST FOR LARGE AND TALL VERSION IN  
ADDITION TO STANDARD OPTION

## FINISHES



FINISHES:

FRAME: FOG B21  
ARM: FOG B21  
BACK: NICKEL MESH MC6  
SEAT: UPH B  
SURFACE: N/A  
BASE: FOG B21

COMMENTS:

**FURNITURE**

ITEM DESCRIPTION: TASK STOOL

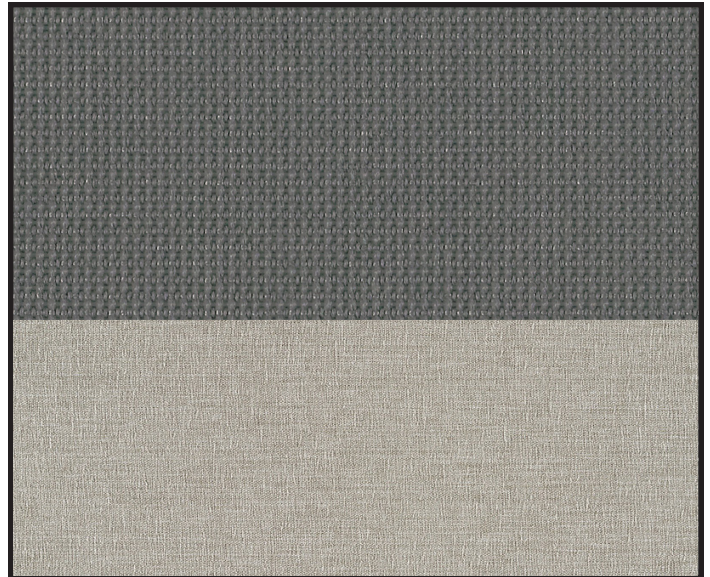
MANUFACTURER: SITONIT

PRODUCT NAME/NUMBER: AMPLIFY MESH BACK TASK  
STOOL / 2722 B1 B FC13 A141 S1 B21

DETAILS: MIDBACK MESH TASK STOOL W/ ADJUSTABLE  
LUMBAR SUPPORT, BASIC MECHANISM, HEIGHT  
ADJUSTABLE ARMS, STOOL KIT BASE, CASTERS

DIMENSIONS: 39"-46.5"H x 27.75"-28.25"W x 24.5"D

COMMENTS:  
300LBS WEIGHT CAPACITY

**FINISHES**

FINISHES:

FRAME: FOG B21  
ARM: FOG B21  
BACK: NICKEL MESH MC6  
SEAT: UPH B  
SURFACE: N/A  
BASE: FOG B21

COMMENTS:

**FURNITURE****FINISHES**

ITEM DESCRIPTION: MEETING CHAIR

MANUFACTURER: SITONIT

PRODUCT NAME/NUMBER: IONIQ COLLABORATIVE  
CHAIR / 1152 FT3 US PB SC26 BT1 BC3 CS6 T

DETAILS: MOLDED PLASTIC COLLABORATIVE TASK CHAIR  
W/ UPHOLSTERED SEAT PAD, 5-STAR NYLON BASE,  
HEIGHT-ADJUSTABLE W/ SWIVEL & TILT

DIMENSIONS: 33.75"-37.5"H x 28"W x 28"D

COMMENTS:  
300LBS WEIGHT CAPACITY  
**OR EQUAL**

FINISHES:

FRAME: WHITE POLY  
ARM: WHITE POLY  
BACK: WHITE POLY  
SEAT: UPH E  
SURFACE: N/A  
BASE: WHITE NYLON

COMMENTS:



**FURNITURE**

ITEM DESCRIPTION: CONSULT CHAIR

MANUFACTURER: ANDREU WORLD

PRODUCT NAME/NUMBER: GALA / SO0722

DETAILS: ARMCHAIR WITH UPHOLSTERED SHELL,  
ALUMINUM 5-STAR CASTER BASE, SWIVEL AND  
PNEUMATIC HEIGHT ADJUSTMENT

DIMENSIONS: 28.75"H x 28.25"W x 27.25"D

COMMENTS:  
350LBS WEIGHT CAPACITY  
**OR EQUAL**

**FINISHES**

FINISHES:

FRAME: N/A  
ARM: UPH H  
BACK: UPH H  
SEAT: UPH H  
SURFACE: N/A  
BASE: BLACK

COMMENTS:

**FURNITURE**

ITEM DESCRIPTION: GUEST CHAIR

MANUFACTURER: SITONIT

PRODUCT NAME/NUMBER: FOCUS SIDE CHAIR / 5652 B1  
A130 GL2

DETAILS: 4-LEG SIDE CHAIR, MESH BACK, FIXED LOOP  
ARMS, UPHOLSTERED SEAT

DIMENSIONS: 34"H x 24.5"W x 26"D

COMMENTS:

300LBS WEIGHT CAPACITY

OR EQUAL (350LB+ WEIGHT CAPACITY PREFERRED FOR  
PROPOSED ALTERNATES)

**FINISHES**

FINISHES:

FRAME: SILVER

ARM: BLACK

BACK: SLATE MESH MC2

SEAT: UPH D

SURFACE: N/A

LEGS: SILVER

COMMENTS:

**FURNITURE**

ITEM DESCRIPTION: GROUP ROOM CHAIR

MANUFACTURER: SPEC

PRODUCT NAME/NUMBER: FIZZ / 2041-U

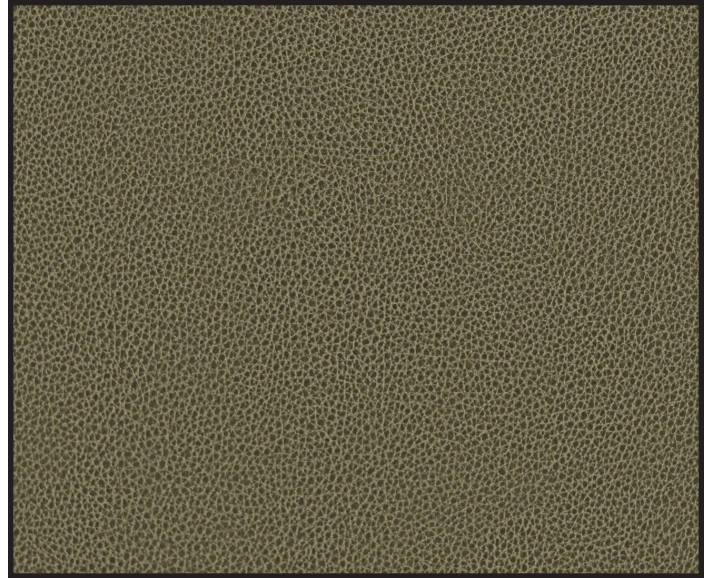
DETAILS: MULTI-PURPOSE STACKING CHAIR WITH METAL FRAME, METAL ARMS, FULLY UPHOLSTERED SEAT AND BACK

DIMENSIONS: 33"H x 27.5"W x 21.5"D

COMMENTS:

400LBS WEIGHT CAPACITY

PROVIDE ENOUGH ASSOCIATED DOLLIES TO HOLD ALL CHAIRS IN PROJECT (MINIMUM ONE PER GROUP ROOM)

**FINISHES**

FINISHES:

FRAME: SPECTONE NICKEL

ARM: SPECTONE NICKEL

BACK: UPH C

SEAT: UPH C

SURFACE: N/A

LEGS: SPECTONE NICKEL

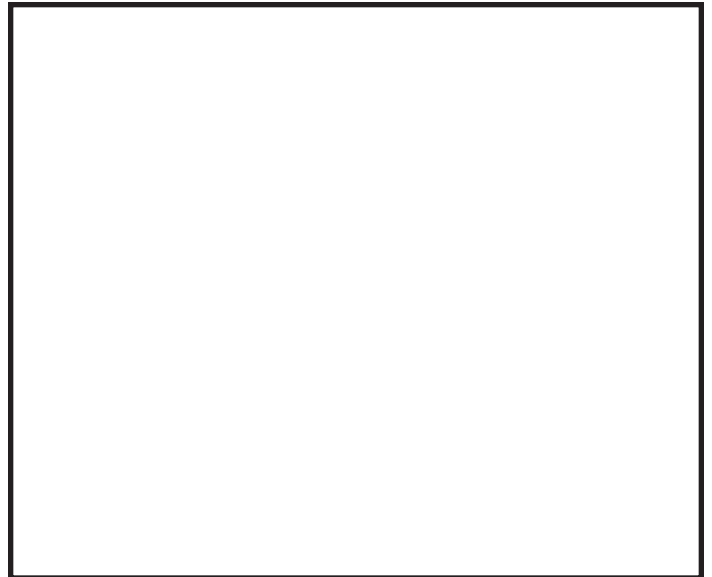
COMMENTS:



**FURNITURE**



**FINISHES**



ITEM DESCRIPTION: INTAKE CHAIR

MANUFACTURER: SPEC

PRODUCT NAME/NUMBER: URBAN / 1404

DETAILS: BARIATRIC GUEST CHAIR, DURASPEC SEAT AND PLASTIC BACK, 4-POINT LEGS, ARMS

DIMENSIONS: 32.5"H x 27.8"W x 22"D

COMMENTS:  
500LBS WEIGHT CAPACITY

FINISHES:

FRAME: SILVER

ARM: BLACK POLYURETHANE

BACK: BLACK PLASTIC

SEAT: BLACK DURASPEC POLY

SURFACE: N/A

LEGS: SILVER

COMMENTS:

**FURNITURE**

ITEM DESCRIPTION: MULTI-PURPOSE CHAIR

MANUFACTURER: KI

PRODUCT NAME/NUMBER: LIMELITE STACK CHAIR /  
LL3111-NFR-PHJ-FN-GSL

DETAILS: STACKING CHAIR W/ SLED BASE, ARMS, ONE-  
PIECE SHELL, PASSIVE FLEX

DIMENSIONS: 33.25"H x 24.75"W x 20"D

COMMENTS:  
400LBS WEIGHT CAPACITY

**FINISHES**

FINISHES:

FRAME: FLANNEL FN  
ARM: FLANNEL FN  
BACK: PHJ HAZY JADE  
SEAT: PHJ HAZY JADE  
SURFACE: N/A  
LEGS: FLANNEL FN

COMMENTS:

**FURNITURE**

ITEM DESCRIPTION: DINING CHAIR - ARMLESS

MANUFACTURER: ANDREU WORLD

PRODUCT NAME/NUMBER: NUEZ / SI2784

DETAILS: SIDE CHAIR W/ PURE ECO THERMO-POLYMER  
SHELL, UPHOLSTERED SHELL PAD

DIMENSIONS: 32"H x 23.5"W x 22.25"D

COMMENTS:  
350LBS WEIGHT CAPACITY

**FINISHES**

FINISHES:

SHELL: POLY BASALT GREY 6012

ARM: N/A

BACK: UPH K

SEAT: UPH K

SURFACE: N/A

LEGS: ASH 306

COMMENTS:

**FURNITURE**

ITEM DESCRIPTION: DINING CHAIR - ARM

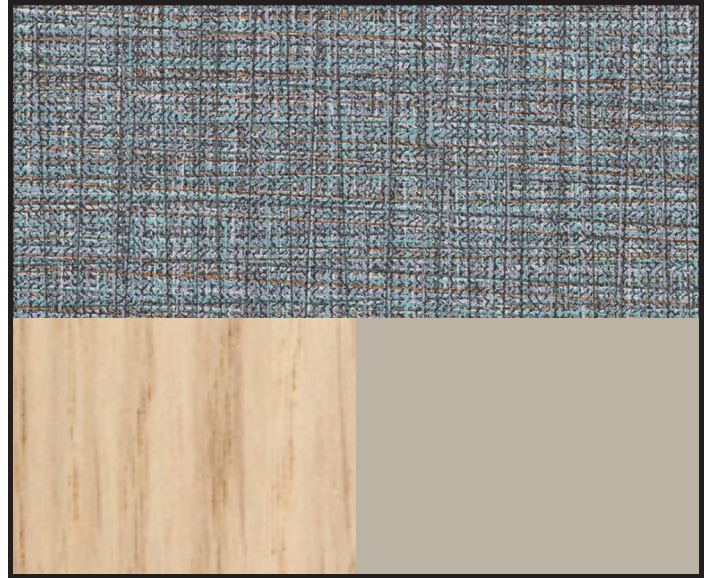
MANUFACTURER: ANDREU WORLD

PRODUCT NAME/NUMBER: NUEZ / SO2770

DETAILS: ARMCHAIR W/ PURE ECO THERMO-POLYMER SHELL, UPHOLSTERED SHELL PAD

DIMENSIONS: 32"H x 23.5"W x 22.25"D

COMMENTS:  
350LBS WEIGHT CAPACITY

**FINISHES**

FINISHES:

SHELL: POLY BASALT GREY 6012

ARM: N/A

BACK: UPH L

SEAT: UPH L

SURFACE: N/A

LEGS: ASH 306

COMMENTS:

## FURNITURE



ITEM DESCRIPTION: COUNTER STOOL

MANUFACTURER: KWALU

PRODUCT NAME/NUMBER: NOVARA COUNTER STOOL /  
NOVASTLC111

DETAILS: FULLY UPHOLSTERED COUNTER STOOL, FOUR  
LEGS, WRAP-AROUND BACK

DIMENSIONS: 37"H x 23.5"W x 22.75"D

COMMENTS:  
350LBS WEIGHT CAPACITY

## FINISHES



FINISHES:

FRAME: SUGAR MAPLE

ARM: UPH J

BACK: UPH J

SEAT: UPH J

SURFACE: N/A

LEGS: NORTHERN OAK

COMMENTS:

**FURNITURE**

ITEM DESCRIPTION: PATIENT CHAIR

MANUFACTURER: KWALU

PRODUCT NAME/NUMBER:  
VALDINA BARIATRIC / VLDFIXB34P  
MODENA PATIENT OTTOMAN / MDAOTT11

DETAILS: FULLY UPHOLSTERED BARIATRIC PATIENT  
CHAIR, HIGH-BACK, OPEN ARMS, OTTOMAN THAT CAN  
BE STORED UNDER SEAT

DIMENSIONS:  
CHAIR: 43"H x 34"W x 27"D  
OTTOMAN: 12.5"H x 17.5"W x 17.75"D

COMMENTS:  
500LBS WEIGHT CAPACITY

**FINISHES**

FINISHES:

FRAME: GOLDEN EBONY  
ARM: GOLDEN EBONY  
BACK: UPH T  
SEAT: UPH T  
SURFACE: N/A  
LEGS: GOLDEN EBONY

COMMENTS:



**FURNITURE**

ITEM DESCRIPTION: BEDROOM CHAIR

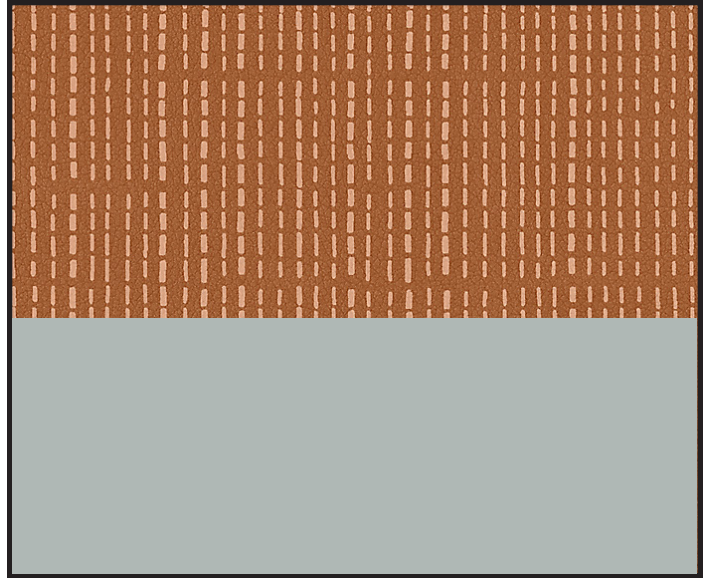
MANUFACTURER: STANCE

PRODUCT NAME/NUMBER: JAX / JXC121A-SS

DETAILS: ARMLESS FULLY UPHOLSTERED CHAIR, FOUR-POINT LEGS

DIMENSIONS: 35"H x 23.5"W x 25.5"D

COMMENTS:  
500LBS WEIGHT CAPACITY

**FINISHES**

FINISHES:

FRAME: SMOOTH SILVER SS

ARM: N/A

BACK: UPH I

SEAT: UPH I

SURFACE: N/A

LEGS: SMOOTH SILVER SS

COMMENTS:

**FURNITURE**

ITEM DESCRIPTION: BEDROOM CHAIR

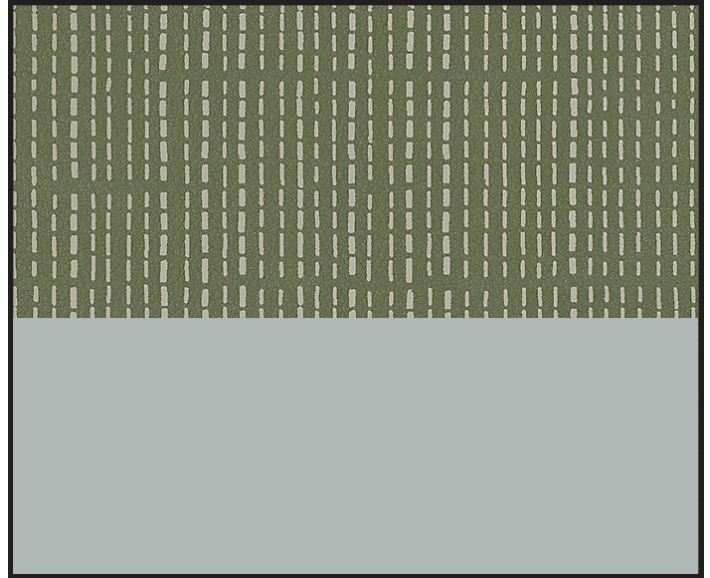
MANUFACTURER: STANCE

PRODUCT NAME/NUMBER: JAX / JXC121A-SS

DETAILS: ARMLESS FULLY UPHOLSTERED CHAIR, FOUR-POINT LEGS

DIMENSIONS: 35"H x 23.5"W x 25.5"D

COMMENTS:  
500LBS WEIGHT CAPACITY

**FINISHES**

FINISHES:

FRAME: SMOOTH SILVER SS

ARM: N/A

BACK: UPH S

SEAT: UPH S

SURFACE: N/A

LEGS: SMOOTH SILVER SS

COMMENTS:



**FURNITURE**

ITEM DESCRIPTION: BEDROOM CHAIR

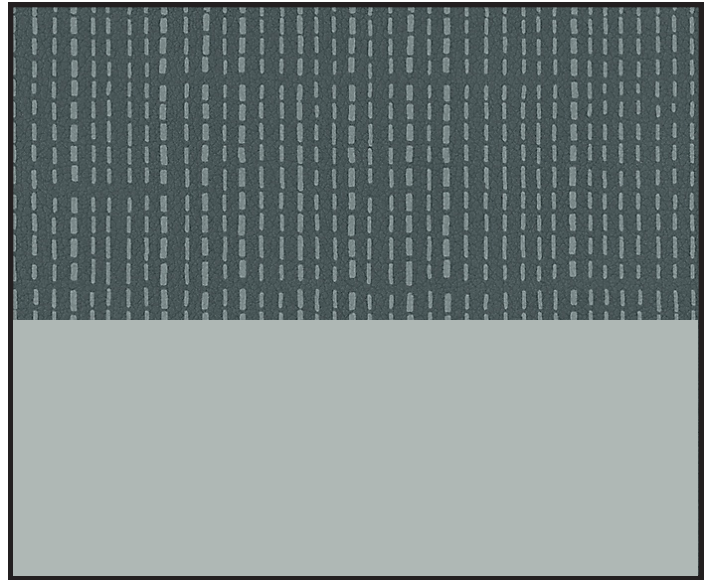
MANUFACTURER: STANCE

PRODUCT NAME/NUMBER: JAX / JXC121A-SS

DETAILS: ARMLESS FULLY UPHOLSTERED CHAIR, FOUR-POINT LEGS

DIMENSIONS: 35"H x 23.5"W x 25.5"D

COMMENTS:  
500LBS WEIGHT CAPACITY

**FINISHES**

FINISHES:

FRAME: SMOOTH SILVER SS

ARM: N/A

BACK: UPH T

SEAT: UPH T

SURFACE: N/A

LEGS: SMOOTH SILVER SS

COMMENTS:

## FURNITURE



ITEM DESCRIPTION: MEDITATION CHAIR

MANUFACTURER: PINEAPPLE

PRODUCT NAME/NUMBER: ZEN PLUS LOUNGE /  
1ZENP1-400

DETAILS: FULLY UPHOLSTERED DE-ESCALATION CHAIR

DIMENSIONS: 39.4"H x 23.6"W x 58.5"D

COMMENTS:  
1100LBS WEIGHT CAPACITY

## FINISHES



FINISHES:

FRAME: N/A

ARM: N/A

BACK: UPH R

SEAT: UPH R

SURFACE: N/A

LEGS: N/A

COMMENTS:

**FURNITURE**

ITEM DESCRIPTION: LOW LOUNGE CHAIR

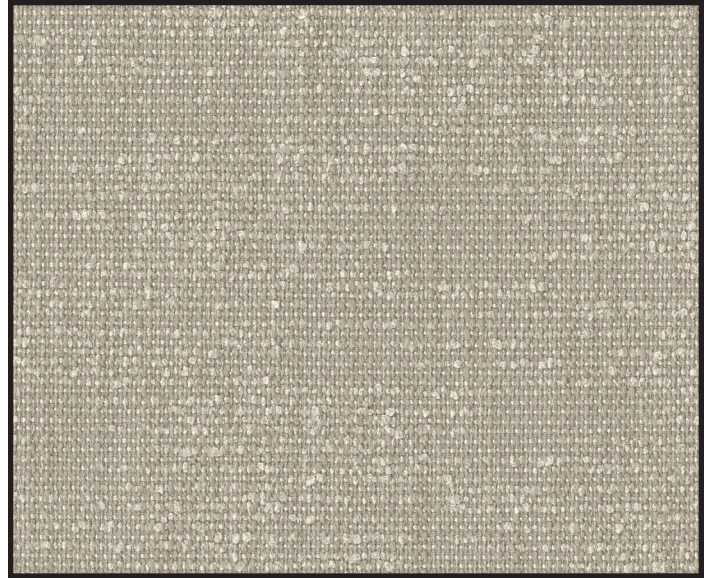
MANUFACTURER: ERG

PRODUCT NAME/NUMBER:  
DAYLEN CLUB LOUNGE / 2569  
DAYLEN 24" OTTOMAN / 2571

DETAILS: FULLY UPHOLSTERED LOW LOUNGE SEAT AND  
OTTOMAN, NO PULL ON CHAIR

DIMENSIONS:  
CHAIR: 32"H x 29"W x 38"D  
OTTOMAN: 18"H x 24"W x 24"D

COMMENTS:  
500LBS WEIGHT CAPACITY

**FINISHES**

FINISHES:

FRAME: N/A  
ARM: N/A  
BACK: UPH M  
SEAT: UPH M  
SURFACE: UPH M  
LEGS: N/A

COMMENTS:



**FURNITURE**

ITEM DESCRIPTION: ROCKING CHAIR

MANUFACTURER: INTEGRA

PRODUCT NAME/NUMBER: REEF ROCKER W/ HDPE  
ROCKING BASE / RFRKC-1-24 (BASE: RFCKRG)

DETAILS: FULLY UPHOLSTERED ROCKING CHAIR,  
TAPERED BACK, HDPE ROCKER BASE, CLEAN OUT

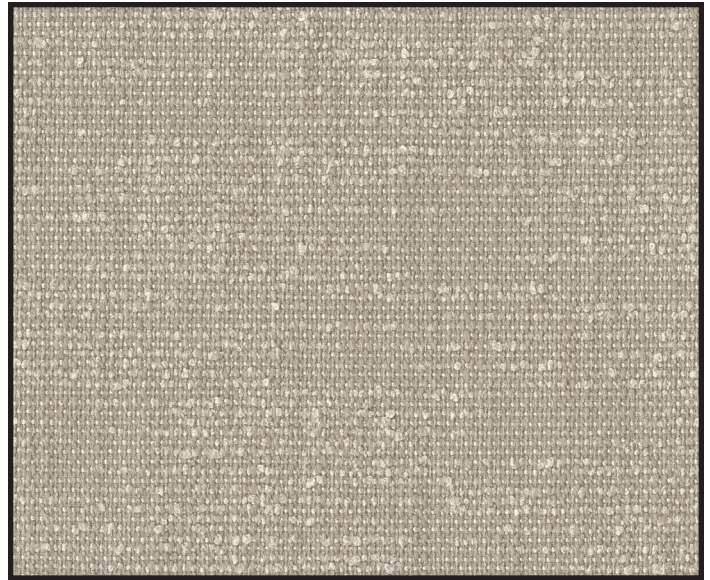
DIMENSIONS: 37"H x 34"W x 32.5"D

COMMENTS:

1000LBS DYNAMIC WEIGHT CAPACITY

2000LBS STATIC WEIGHT CAPACITY

OR EQUAL (MINIMUM 350LBS WEIGHT CAPACITY FOR  
PROPOSED ALTERNATES)

**FINISHES**

FINISHES:

FRAME: N/A

ARM: UPH M

BACK: UPH M

SEAT: UPH M

SURFACE: N/A

BASE: GRAY HDPE

COMMENTS:

**FURNITURE**

ITEM DESCRIPTION: LOUNGE CHAIR

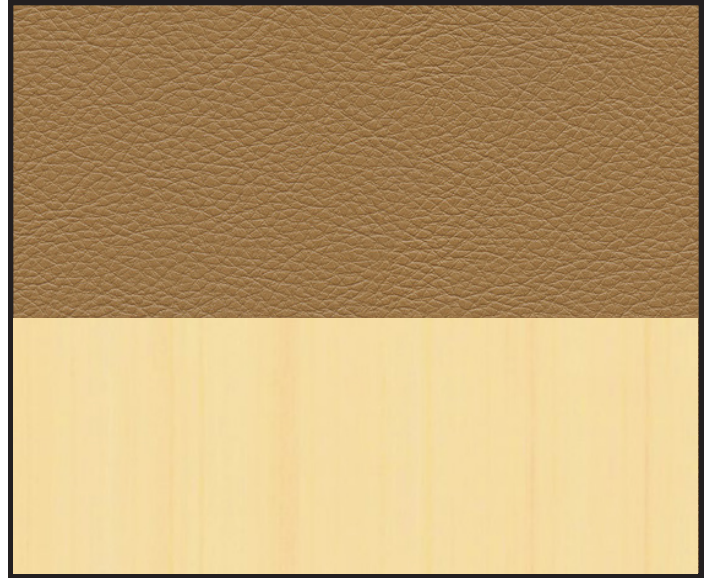
MANUFACTURER: KWALU

PRODUCT NAME/NUMBER: PADUA LOUNGE / PDUA111

DETAILS: FULLY UPHOLSTERED LOUNGE CHAIR

DIMENSIONS: 29.5"H x 32.5"W x 31.25"D

COMMENTS:  
350LBS WEIGHT CAPACITY  
OR EQUAL

**FINISHES**

FINISHES:

FRAME: SUGAR MAPLE

ARM: UPH F

BACK: UPH F

SEAT: UPH F

SURFACE: N/A

LEGS: SUGAR MAPLE

COMMENTS:

**FURNITURE**

ITEM DESCRIPTION: MODULAR BANQUETTE

MANUFACTURER: SPEC

PRODUCT NAME/NUMBER: TAILOR LOUNGE - MODULAR  
SINGLE SEAT CORNER UNIT (ARMLESS) / 9101MCCRNR  
TWO-SEAT (ARMLESS) / 9102MC-NA  
THREE-SEAT (ARMLESS) / 9103MC-NA

DETAILS: MODULAR LOUNGE PIECES ATTACHED W/  
CONNECTING PLATE

**DIMENSIONS:**

CORNER UNIT: 33"H x 27.5"W x 27.5"D

TWO-SEAT: 33"H x 46"W x 29"D

THREE-SEAT: 33"H x 69"W x 29"D

**COMMENTS:**

CORNER UNIT 500LBS WEIGHT CAPACITY

TWO-SEAT UNIT 570LBS WEIGHT CAPACITY

THREE-SEAT UNIT 750LBS WEIGHT CAPACITY

**FINISHES**

**FINISHES:**

FRAME: SPECTONE RAL 8019

ARM: N/A

BACK: UPH V

SEAT: UPH V

SURFACE: N/A

LEGS: SPECTONE RAL 8019

**COMMENTS:**



**FURNITURE**

ITEM DESCRIPTION: MODULAR SOFA

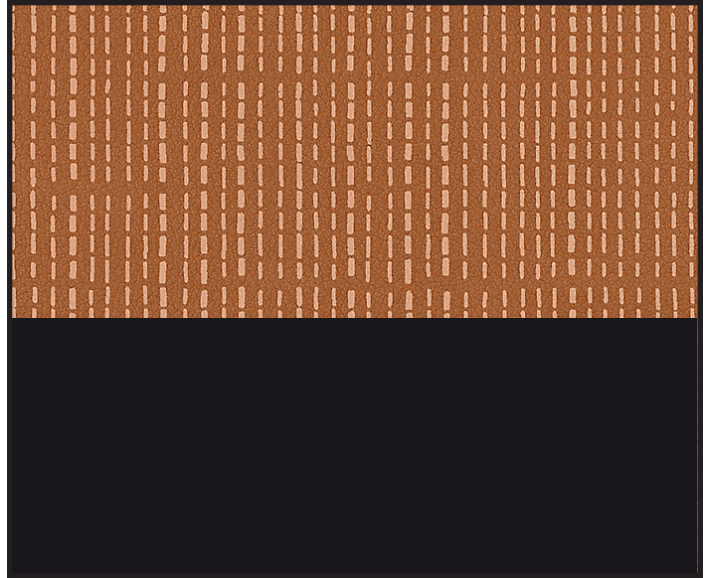
MANUFACTURER: ANDREU WORLD

PRODUCT NAME/NUMBER: RAGLAN HOME / SF2211

DETAILS: THREE-SEAT FULLY UPHOLSTERED SOFA, FIXED  
BACK CUSHIONS, DIE-CAST ALUMINUM BASE

DIMENSIONS: 33"H x 97"W x 39"D

COMMENTS:  
330LBS WEIGHT CAPACITY PER SEAT  
**OR EQUAL**

**FINISHES**

FINISHES:

FRAME: BLACK

ARM: UPH I

BACK: UPH I

SEAT: UPH I

SURFACE: N/A

LEGS: BLACK

COMMENTS:

EDGE PIPING - SAND

## FURNITURE



ITEM DESCRIPTION: MODULAR SOFA

MANUFACTURER: ANDREU WORLD

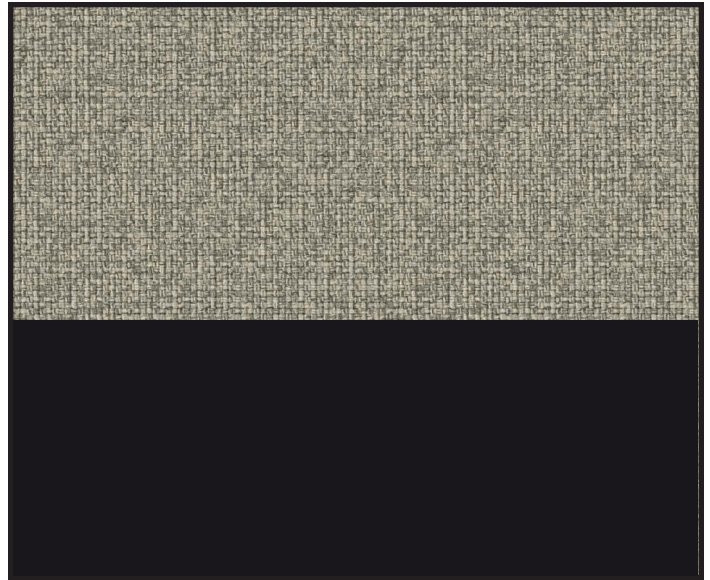
PRODUCT NAME/NUMBER: RAGLAN HOME  
3-SEATER CORNER SOFA (RIGHT) / SF2214  
CORNER SOFA / SF2216  
OTTOMAN / RS2219

DETAILS: FULLY UPHOLSTERED MODULAR SOFA  
MADE UP OF A THREE-SEAT, SINGLE CORNER SEAT,  
AND OTTOMAN. FIXED BACK CUSHIONS, DIE-CAST  
ALUMINUM BASE

DIMENSIONS:  
THREE-SEAT: 33"H x 87.75"W x 39"D  
CORNER SEAT: 33"H x 39"W x 39"D  
OTTOMAN: 16.5"H x 39"W x 39"D

COMMENTS:  
330LBS WEIGHT CAPACITY PER SEAT

## FINISHES



FINISHES:

FRAME: BLACK  
ARM: UPH O  
BACK: UPH O  
SEAT: UPH O  
SURFACE: N/A  
LEGS: BLACK

COMMENTS:  
EDGE PIPING - SAND



**FURNITURE**

ITEM DESCRIPTION: MODULAR SOFA

MANUFACTURER: ANDREU WORLD

PRODUCT NAME/NUMBER: RAGLAN HOME  
3-SEATER CORNER SOFA (RIGHT) / SF2214  
2-SEATER SOFA / SF2210

DETAILS: FULLY UPHOLSTERED MODULAR SOFA MADE  
UP OF A THREE-SEAT AND TWO-SEAT. FIXED BACK  
CUSHIONS, DIE-CAST ALUMINUM BASE

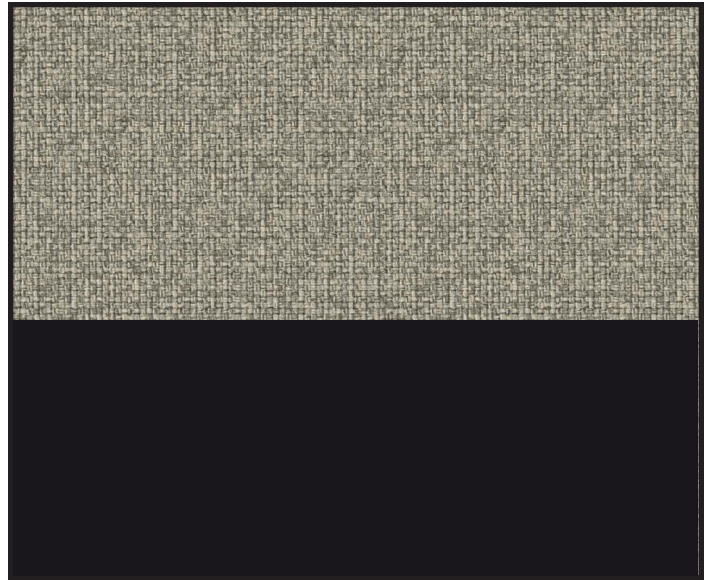
DIMENSIONS:

THREE-SEAT: 33"H x 87.75"W x 39"D

TWO-SEAT: 33"H x 85"W x 39"D

COMMENTS:

330LBS WEIGHT CAPACITY PER SEAT

**FINISHES**

FINISHES:

FRAME: BLACK

ARM: UPH O

BACK: UPH O

SEAT: UPH O

SURFACE: N/A

LEGS: BLACK

COMMENTS:

EDGE PIPING - SAND

**FURNITURE**

ITEM DESCRIPTION: MODULAR SOFA

MANUFACTURER: ANDREU WORLD

PRODUCT NAME/NUMBER: RAGLAN HOME

3-SEATER / SF2211

2-SEATER CORNER SOFA (RIGHT) / SF2212

DETAILS: FULLY UPHOLSTERED MODULAR SOFA MADE UP OF A THREE-SEAT AND TWO-SEAT. FIXED BACK CUSHIONS, DIE-CAST ALUMINUM BASE

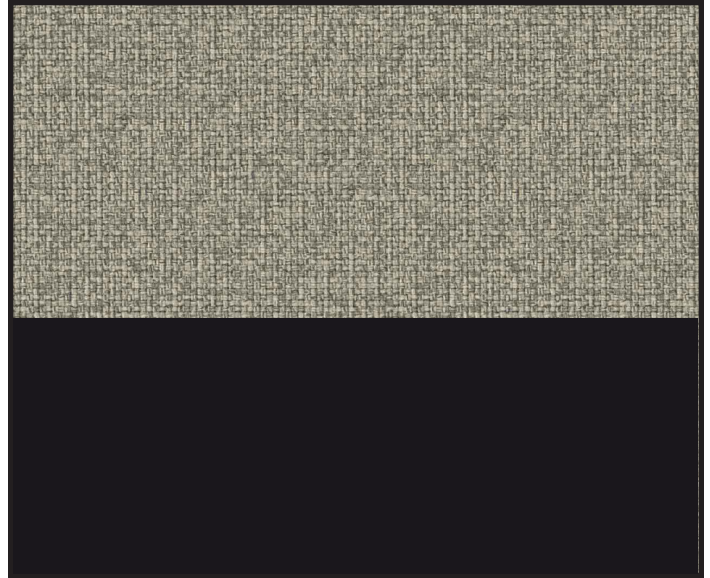
**DIMENSIONS:**

THREE-SEAT: 33"H x 97"W x 39"D

TWO-SEAT: 33"H x 76"W x 39"D

**COMMENTS:**

330LBS WEIGHT CAPACITY PER SEAT

**FINISHES**

**FINISHES:**

FRAME: BLACK

ARM: UPH O

BACK: UPH O

SEAT: UPH O

SURFACE: N/A

LEGS: BLACK

**COMMENTS:**

EDGE PIPING - SAND

**FURNITURE**

ITEM DESCRIPTION: BENCH

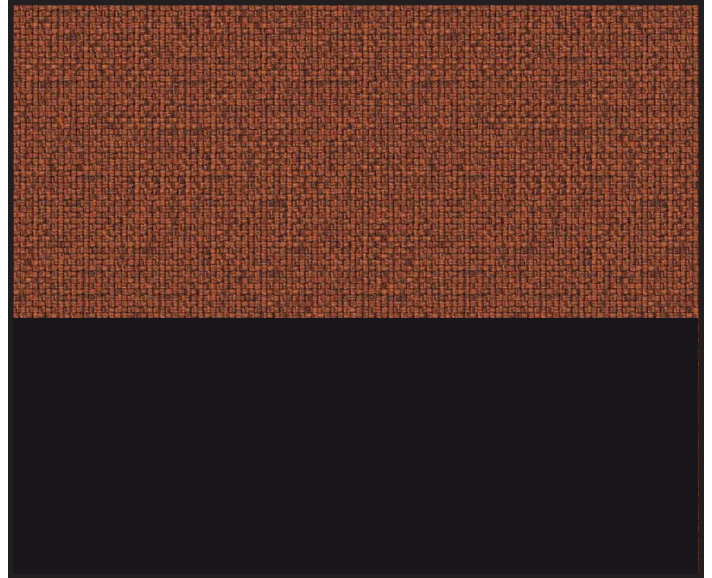
MANUFACTURER: ANDREU WORLD

PRODUCT NAME/NUMBER: RAGLAN / BC2078

DETAILS: THREE-SEAT BENCH W/ FOUR-POINT LEGS, DIE-CAST ALUMINUM BASE

DIMENSIONS: 17.75"H x 71"W x 23.75"D

COMMENTS:  
330LBS WEIGHT CAPACITY PER SEAT  
**OR EQUAL**

**FINISHES**

FINISHES:

FRAME: BLACK

ARM: N/A

BACK: UPH A

SEAT: UPH A

SURFACE: N/A

LEGS: BLACK

COMMENTS:

EDGE PIPING - BLACK



**FURNITURE**

ITEM DESCRIPTION: BENCH

MANUFACTURER: ANDREU WORLD

PRODUCT NAME/NUMBER: RAGLAN / BC2078

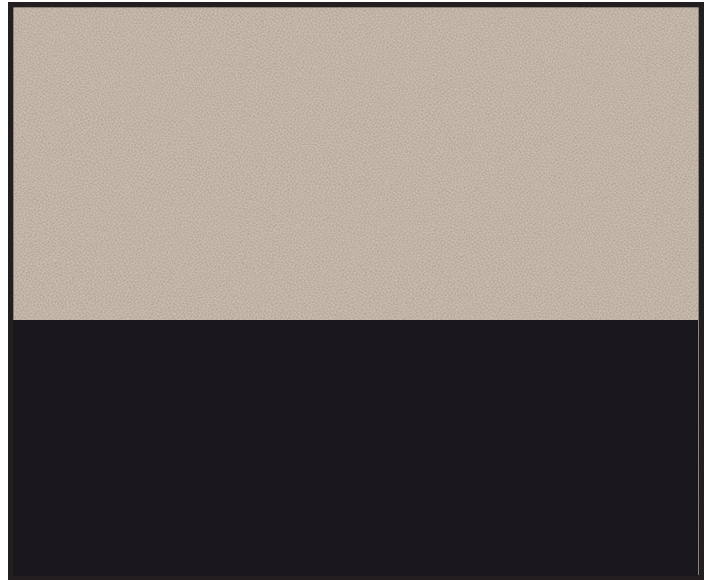
DETAILS: THREE-SEAT BENCH W/ FOUR-POINT LEGS, DIE-CAST ALUMINUM BASE

DIMENSIONS: 17.75"H x 71"W x 23.75"D

COMMENTS:

330LBS WEIGHT CAPACITY PER SEAT

OR EQUAL

**FINISHES**

FINISHES:

FRAME: BLACK

ARM: N/A

BACK: UPH E

SEAT: UPH E

SURFACE: N/A

LEGS: BLACK

COMMENTS:

EDGE PIPING - SAND

**FURNITURE**

ITEM DESCRIPTION: BENCH - OUTDOOR

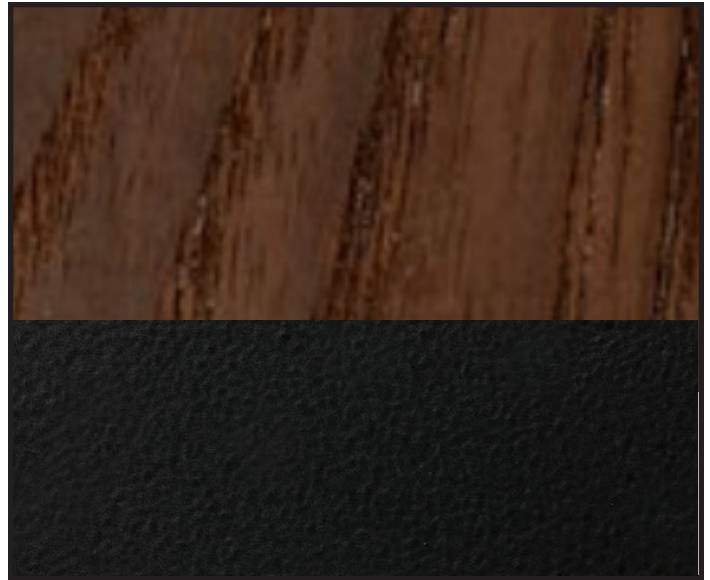
MANUFACTURER: LANDSCAPE FORMS

PRODUCT NAME/NUMBER: MELVILLE BACKED-WOOD

DETAILS: OUTDOOR BACKED BENCH, NO FINISH WOOD  
SEAT, NO DIVIDERS, SURFACE MOUNT

DIMENSIONS: 30"H x 19"D x 76"W

COMMENTS:

**FINISHES**

FINISHES:

FRAME: OBSIDIAN

ARM: OBSIDIAN

BACK: OBSIDIAN

SEAT: DOMESTICALLY SOURCED THERMALLY

MODIFIED ASH

SURFACE: N/A

LEGS: OBSIDIAN

COMMENTS:

**FURNITURE**

ITEM DESCRIPTION: BENCH - OUTDOOR, W/ ARMS

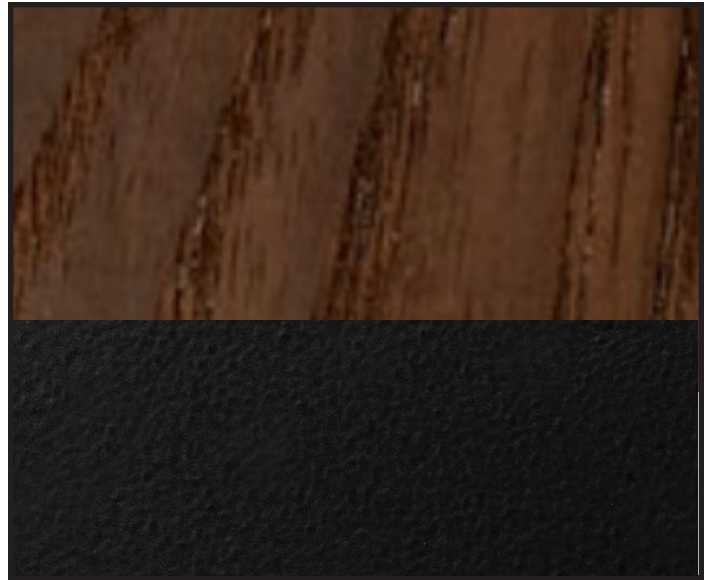
MANUFACTURER: LANDSCAPE FORMS

PRODUCT NAME/NUMBER: HARPO BACKED BENCH

DETAILS: OUTDOOR BACKED BENCH W/ ARMS, WIDE WOOD SLATS, SURFACE MOUNT

DIMENSIONS: 31"H x 69"W x 23"D

COMMENTS:

**FINISHES**

FINISHES:

FRAME: OBSIDIAN

ARM: OBSIDIAN

BACK: DOMESTICALLY SOURCED THERMALLY

MODIFIED ASH

SEAT: DOMESTICALLY SOURCED THERMALLY

MODIFIED ASH

SURFACE: N/A

LEGS: OBSIDIAN

COMMENTS:



**FURNITURE**

ITEM DESCRIPTION: BENCH - OUTDOOR, BACKLESS

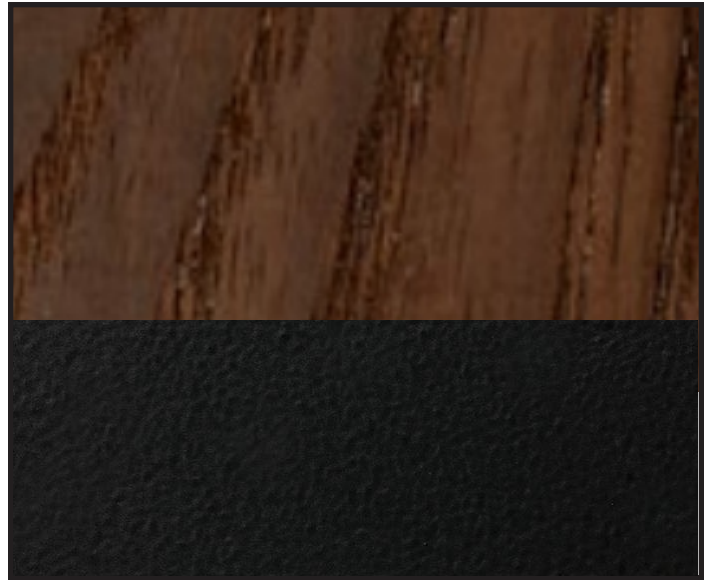
MANUFACTURER: LANDSCAPE FORMS

PRODUCT NAME/NUMBER: HARPO BACKLESS BENCH

DETAILS: TWO-SEAT OUTDOOR BACKLESS BENCH, WIDE WOOD SLATS, SURFACE MOUNT

DIMENSIONS: 18"H x 69"W x 17"D

COMMENTS:

**FINISHES**

FINISHES:

FRAME: OBSIDIAN

ARM: OBSIDIAN

BACK: DOMESTICALLY SOURCED THERMALLY

MODIFIED ASH

SEAT: DOMESTICALLY SOURCED THERMALLY

MODIFIED ASH

SURFACE: N/A

LEGS: OBSIDIAN

COMMENTS:

**FURNITURE**

ITEM DESCRIPTION: BENCH - OUTDOOR, BACKLESS,  
SINGLE SEAT

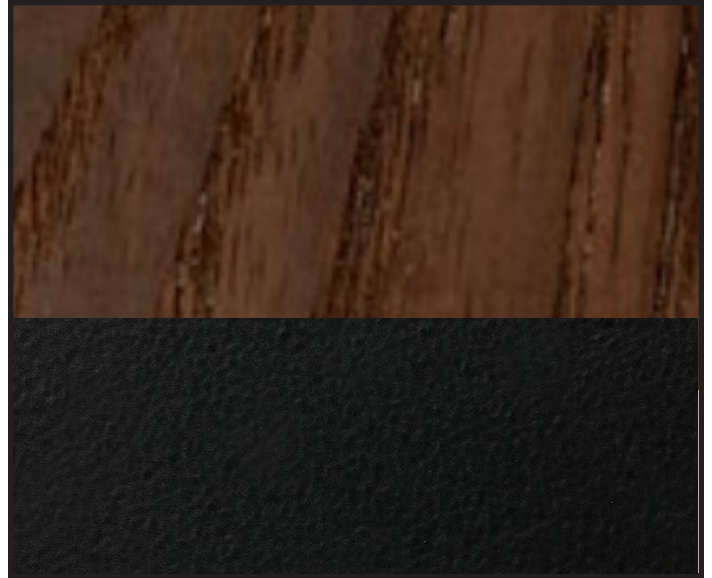
MANUFACTURER: LANDSCAPE FORMS

PRODUCT NAME/NUMBER: HARPO

DETAILS: TWO-SEAT OUTDOOR BACKLESS BENCH, WIDE  
WOOD SLATS, SURFACE MOUNT

DIMENSIONS: 18"H x 24"W x 17"D

COMMENTS:

**FINISHES**

FINISHES:

FRAME: OBSIDIAN

ARM: OBSIDIAN

BACK: DOMESTICALLY SOURCED THERMALLY  
MODIFIED ASH

SEAT: DOMESTICALLY SOURCED THERMALLY

MODIFIED ASH

SURFACE: N/A

LEGS: OBSIDIAN

COMMENTS:



# DESKS

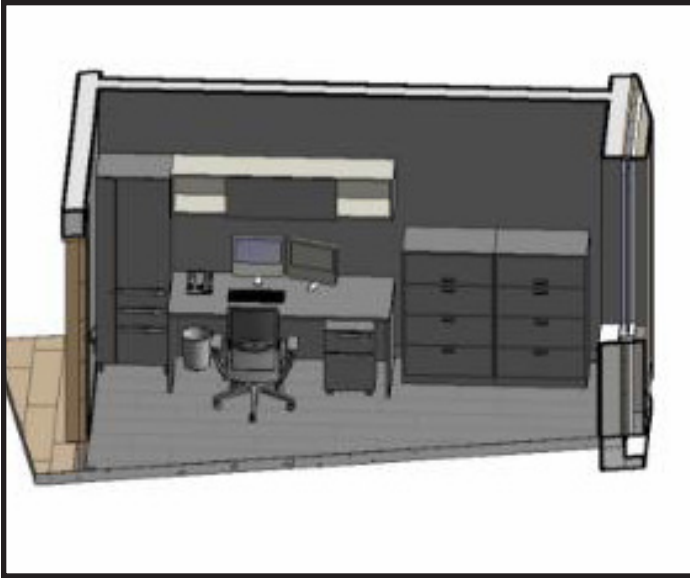
---

NAC # 411-22106

LUCAS COUNTY MHR SB - DANI'S PLACE

**NAC**  
ARCHITECTURE

## FURNITURE



ITEM DESCRIPTION: TYPICAL PRIVATE OFFICE  
MANUFACTURER: JSI  
PRODUCT NAME/NUMBER: VISION CASEGOODS

ITEM DESCRIPTION:  
30"H X 72"W X 30"D FIXED HEIGHT SURFACE WITH  
PANEL LEG & BOX/BOX/FILE PEDESTAL - PEDESTAL TO BE  
LOCATED OPPOSITE TALL STORAGE  
72"H x 24"W x 18"D COMBINATION WARDROBE,  
STORAGE, BOX/BOX/FILE (PROVIDE ADJUSTABLE  
SHELVES WITHIN STORAGE PORTION)  
15"H x 72"W x 15"D WALL MOUNTED OVERHEAD  
STORAGE W/ SOLID DOORS  
FABRIC-WRAPPED TACKABLE SURFACE BETWEEN DESK  
TOP AND BOTTOM OF OVERHEAD STORAGE  
ALL DOORS & DRAWERS TO HAVE STRAIGHT PULLS  
ALL DOORS & DRAWERS TO BE LOCKING AND KEYED  
ALIKE WITHIN EACH OFFICE  
PROVIDE UNDER-SURFACE CABLE MANAGEMENT &  
GROMMETS AT ALL WORKSURFACES

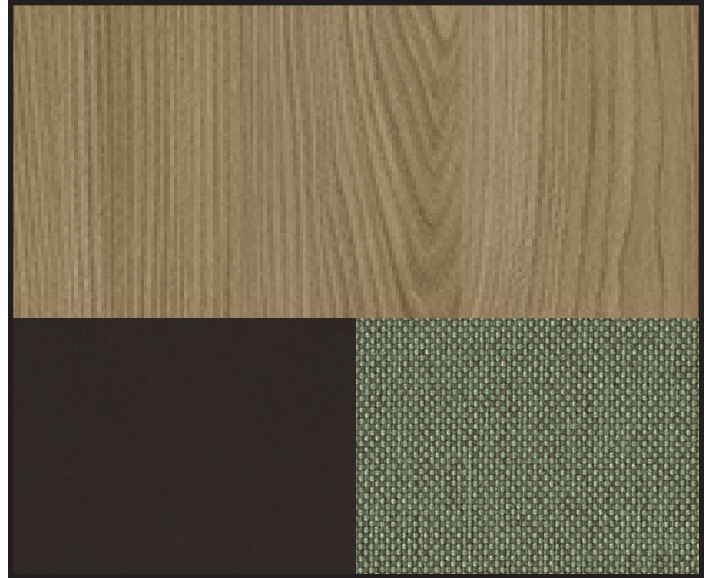
COMMENTS:  
IF MODESTY PANEL IS REQUIRED ENSURE ACCESS TO  
WALL POWER/DATA THROUGH MODESTY PANEL  
OVERHEAD STORAGE MUST BE ABLE TO BE INSTALLED  
WITHOUT BLOCKING, WALL IS METAL STUD  
CONSTRUCTION

OR EQUAL

NAC # 411-22106

LUCAS COUNTY MHR SB - DAN I'S PLACE

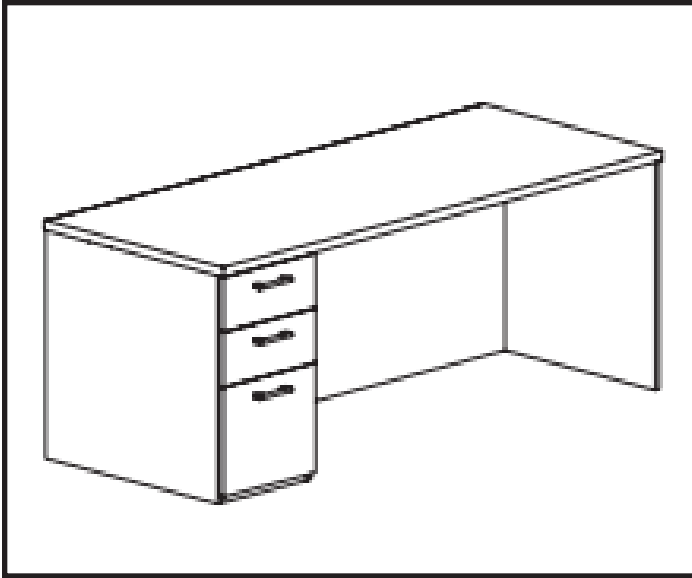
## FINISHES



FINISHES:  
SURFACE: WILSONART ACORN VELVET ELM 15602  
TACKABLE SURFACE: UPH U  
METAL PULLS: AGED BRONZE

COMMENTS:

## FURNITURE



ITEM DESCRIPTION: NURSE DESK

MANUFACTURER: JSI

PRODUCT NAME/NUMBER: VISION CASEGOODS

### ITEM DESCRIPTION:

30"H X 60"W X 30"D FIXED HEIGHT SURFACE WITH PANEL  
LEG & BOX/BOX/FILE PEDESTAL  
ALL DRAWERS TO HAVE STRAIGHT PULLS  
ALL DRAWERS TO BE LOCKING AND KEYED ALIKE WITHIN  
EACH OFFICE  
PEDESTAL TO BE LOCATED ON RIGHT SIDE OF DESK  
PROVIDE UNDER-SURFACE CABLE MANAGEMENT &  
GROMMET AT BACK/CENTER IN WORKSURFACE

### COMMENTS:

IF MODESTY PANEL IS REQUIRED ENSURE ACCESS TO  
WALL POWER/DATA THROUGH MODESTY PANEL  
**OR EQUAL**

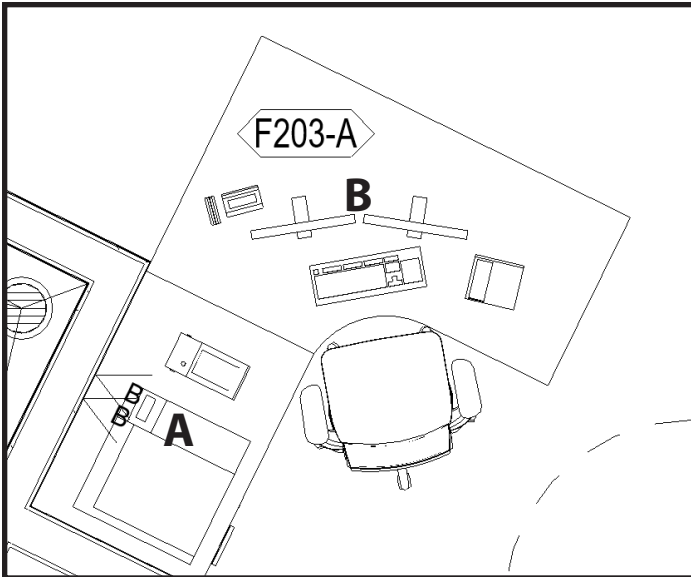
## FINISHES



### FINISHES:

SURFACE: WILSONART ACORN VELVET ELM 15602  
METAL PULLS: AGED BRONZE

### COMMENTS:

**FURNITURE**

ITEM DESCRIPTION: RECEPTION DESK

MANUFACTURER: JSI

PRODUCT NAME/NUMBER: VISION CASEGOODS

ITEM DESCRIPTION:

A: 30"H x 42"W x 30"D RETURN W/ LEFT PEDESTAL (BOX/BOX/FILE)

PROVIDE GROMMET BACK/CENTER

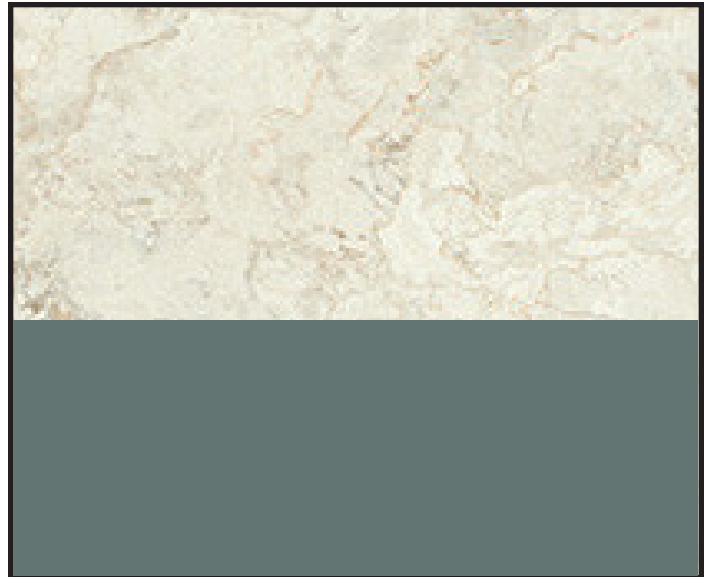
IF MODESTY REQUIRE FOR "A" ENSURE ACCESS TO POWER/DATA IN WALL

B: 30"H x 66"W x 42"D EXTENDED CORNER DESK TOP W/ END PANEL AND FULL MODESTY PANEL

PROVIDE GROMMET LEFT/CENTER

COMMENTS:

PANIC AND REMOTE DOOR OPERATION TO BE WIRED TO SEATED POSITION OF DESK

**OR EQUAL****FINISHES**

FINISHES:

SURFACE: WILSONART CALACATTA ORO

BASE: PIONITE MOSSY GRAY

COMMENTS:

# TABLES

---



**FURNITURE**

ITEM DESCRIPTION: FLIP-TOP TABLE

MANUFACTURER: SPEC

PRODUCT NAME/NUMBER: MANHATTAN / 3060RE-MNT  
(FT)

OVAL GROMMET / CTRG

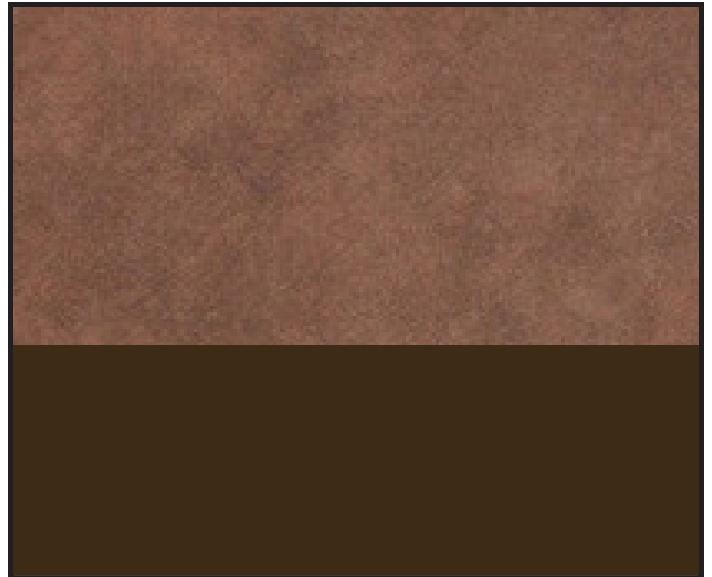
ACRYLIC MODESTY PANEL / PMP-RESIN60

ITEM DESCRIPTION: FLIP-TOP RECTANGULAR TABLE ON  
CASTERS, OVAL GROMMET CENTERED IN TABLE TOP,  
ACRYLIC MODESTY PANEL

DIMENSIONS: 29"H x 60"W x 30"D

COMMENTS:

OR EQUAL

**FINISHES**

FINISHES:

SURFACE: WILSONART BURNISHED

CHESTNUT 4796-60

EDGE: BIO 2MM RAL 8028

LEGS: SPECTONE NICKEL

COMMENTS:

BLACK CASTERS

**FURNITURE**

ITEM DESCRIPTION: ROUND DISC BASE TABLE

MANUFACTURER: SPEC

PRODUCT NAME/NUMBER: TRUMPET FLAT METAL BASE /  
36D-DISC-29

ITEM DESCRIPTION: DISC BASE, ROUND TOP, STANDARD  
HEIGHT LAMINATE TABLE

DIMENSIONS: 29"H x 36"DIA

COMMENTS:

OR EQUAL

**FINISHES**

FINISHES:

SURFACE: WILSONART LINEN

EDGE: BIO 2MM RAL 9002

BASE: SPECTONE NICKEL

COMMENTS:

**FURNITURE**

ITEM DESCRIPTION: ROUND DISC BASE TABLE

MANUFACTURER: SPEC

PRODUCT NAME/NUMBER: TRUMPET FLAT METAL BASE /  
42D-DISC-29

ITEM DESCRIPTION: DISC BASE, ROUND TOP, STANDARD  
HEIGHT LAMINATE TABLE

DIMENSIONS: 29"H x 42"DIA

COMMENTS:

OR EQUAL

**FINISHES**

FINISHES:

SURFACE: WILSONART ACORN VELVET ELM  
15602, ULTRA MATTE FINISH  
EDGE: BIO 2MM NICKEL  
BASE: SPECTONE NICKEL

COMMENTS:

**FURNITURE**

ITEM DESCRIPTION: ROUND DISC BASE TABLE

MANUFACTURER: SPEC

PRODUCT NAME/NUMBER: TRUMPET FLAT METAL BASE /  
48D-DISC-29

ITEM DESCRIPTION: DISC BASE, ROUND TOP, STANDARD  
HEIGHT LAMINATE TABLE

DIMENSIONS: 29"H x 48"DIA

COMMENTS:

OR EQUAL

**FINISHES**

FINISHES:

SURFACE: WILSONART LINEN

EDGE: BIO 2MM RAL 9002

BASE: SPECTONE NICKEL

COMMENTS:



**FURNITURE**

ITEM DESCRIPTION: WORK TABLE

MANUFACTURER: KI

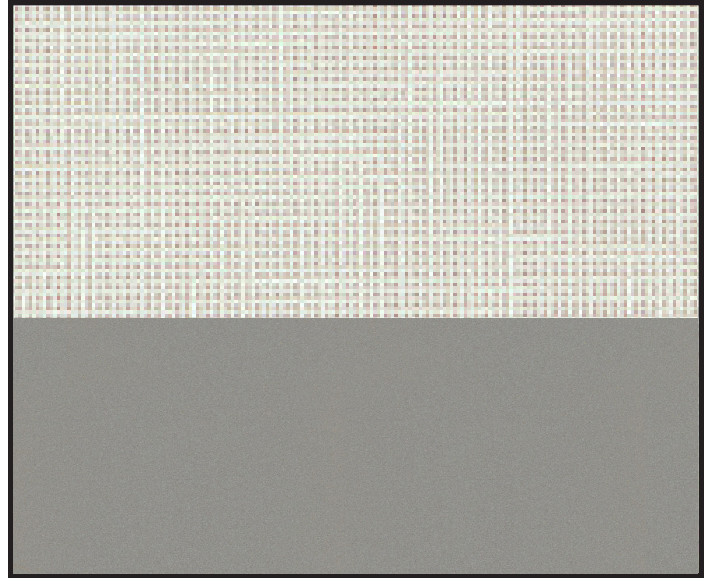
PRODUCT NAME/NUMBER: PILLAR LARGE RECTANGULAR  
/ PLLT4872-74P-GO2-NMP-EWG-LRI-SX-CST

ITEM DESCRIPTION: LARGE WORKTABLE ON CASTERS,  
STANDARD HEIGHT, NODE GROMMET

DIMENSIONS: 29"H x 72"W x 48"D

COMMENTS:

OR EQUAL

**FINISHES**

FINISHES:

SURFACE: CRISP LINEN (LRI)

EDGE: WARM GREY (EWG)

LEGS: STARLIGHT SILVER METALLIC (SX)

COMMENTS:

**FURNITURE**

ITEM DESCRIPTION: MOBILE STAINLESS STEEL TABLE

MANUFACTURER: GLOBAL INDUSTRIAL

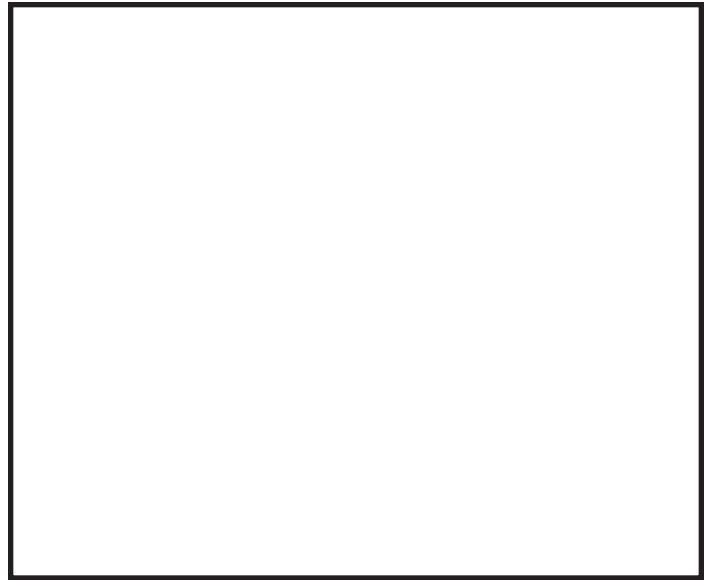
PRODUCT NAME/NUMBER: MOBILE STAINLESS STEEL  
INSTRUMENT TABLE / WBB529967

ITEM DESCRIPTION: FULLY-WELDED STEEL LEGS ON  
3" CASTERS, SANITARY CLOSED-TOP HEM, LOCKING  
CASTERS

DIMENSIONS: 60"L X 24"W X 34"H

COMMENTS:

OR EQUAL

**FINISHES**

FINISHES:

SURFACE: 18-GAUGE, 304 STAINLESS STEEL

LEGS: 18-GUAGE, 304 STAINLESS STEEL

COMMENTS:

**FURNITURE**

ITEM DESCRIPTION: MOBILE STAINLESS STEEL TABLE

MANUFACTURER: GLOBAL INDUSTRIAL

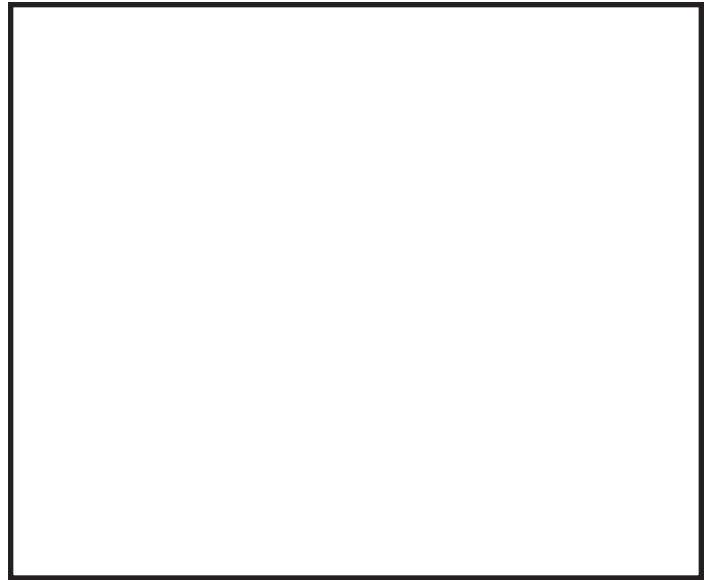
PRODUCT NAME/NUMBER: MOBILE STAINLESS STEEL  
INSTRUMENT TABLE / WBB529964

ITEM DESCRIPTION: FULLY-WELDED STEEL LEGS ON  
3" CASTERS, SANITARY CLOSED-TOP HEM, LOCKING  
CASTERS

DIMENSIONS: 48"L X 24"W X 34"H

COMMENTS:

OR EQUAL

**FINISHES**

FINISHES:

SURFACE: 18-GAUGE, 304 STAINLESS STEEL

LEGS: 18-GUAGE, 304 STAINLESS STEEL

COMMENTS:

**FURNITURE**

ITEM DESCRIPTION: LAPTOP TABLE

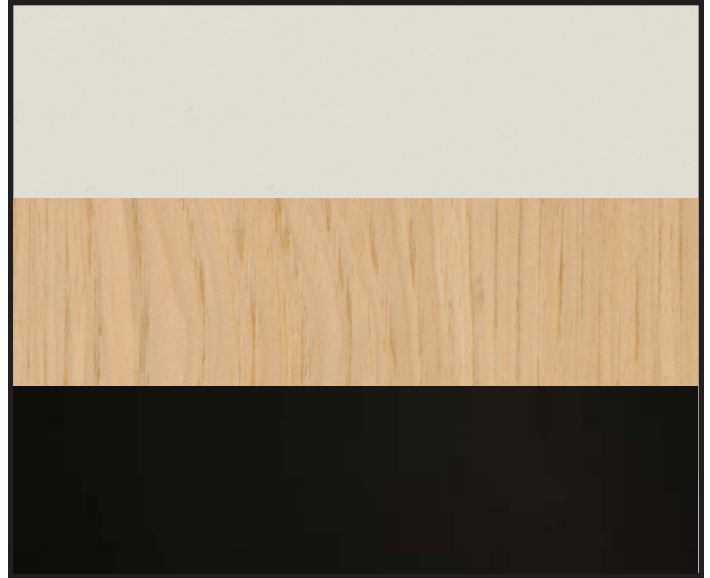
MANUFACTURER: OFS

PRODUCT NAME/NUMBER: HEYA / 82T2015

ITEM DESCRIPTION: PULL-UP LAPTOP TABLE, LAMINATE  
TOP

DIMENSIONS: 27"H x 20"W x 19"D

COMMENTS:

**FINISHES**

FINISHES:

SURFACE: GREY (GRP)

LEG: OSLO (OSL)

BASE: ONYX (BKO)

COMMENTS:



**FURNITURE**

ITEM DESCRIPTION: CONSULT TABLE

MANUFACTURER: KI

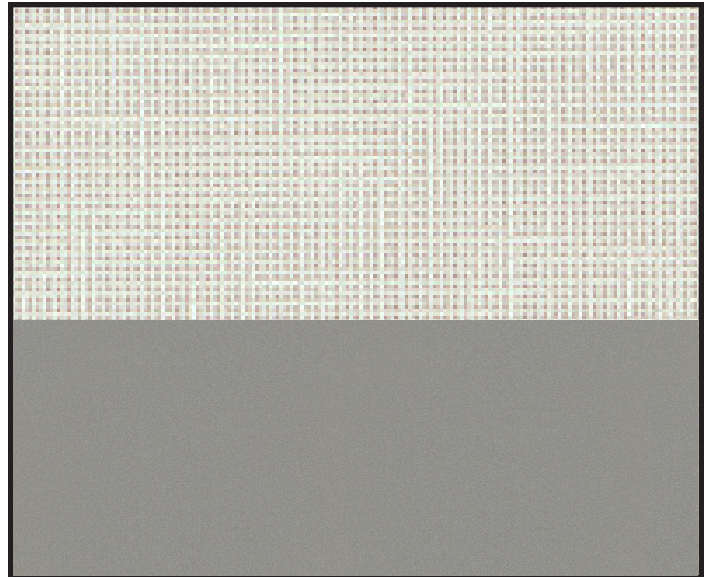
PRODUCT NAME/NUMBER: PILLAR D-SHAPE / PLDT4872-74P-GO2-NMP-EWG-LRI-SX-GLD

ITEM DESCRIPTION: STANDARD HEIGHT D-SHAPE TABLE, GLIDES, NODE GROMMET

DIMENSIONS: 29"H x 48"W x 72"D

COMMENTS:

OR EQUAL

**FINISHES**

FINISHES:

SURFACE: CRISP LINEN (LRI)

EDGE: WARM GREY (EWG)

LEGS: STARLIGHT SILVER METALLIC (SX)

COMMENTS:

**FURNITURE**



ITEM DESCRIPTION: DINING TABLE

MANUFACTURER: JSI

PRODUCT NAME/NUMBER: BOURNE / BU4284-30TTWL

ITEM DESCRIPTION: STANDARD HEIGHT RECTANGULAR  
TABLE, HPL LAMINATE TOP, SOLID WOOD LEG

DIMENSIONS: 30"H x 84"W x 42"D

COMMENTS:

**FINISHES**



FINISHES:

SURFACE: FAWN (FAW)

LEGS/APRON: FAWN (FAW)

COMMENTS:

**FURNITURE**



ITEM DESCRIPTION: DINING TABLE

MANUFACTURER: JSI

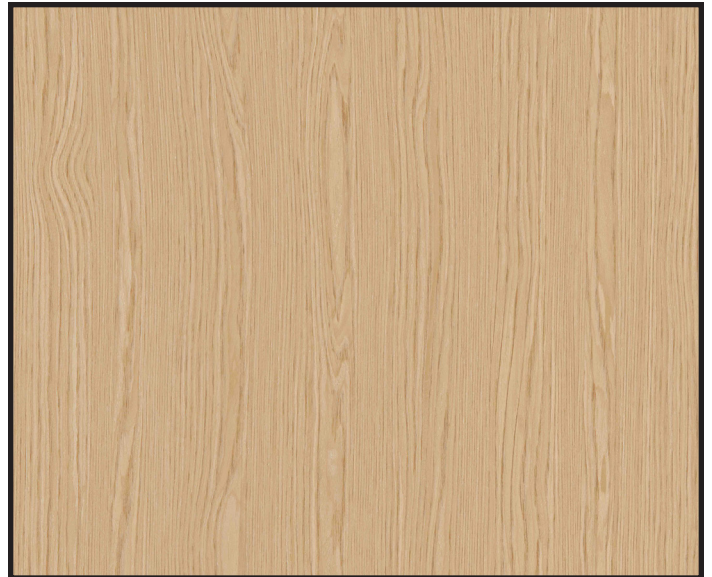
PRODUCT NAME/NUMBER: BOURNE / BU4242-30TTWL

ITEM DESCRIPTION: STANDARD HEIGHT SQUARE TABLE,  
HPL LAMINATE TOP, SOLID WOOD LEGS

DIMENSIONS: 30"H x 42"W x 42"D

COMMENTS:

**FINISHES**



FINISHES:

SURFACE: FAWN (FAW)

LEGS/APRON: FAWN (FAW)

COMMENTS:

**FURNITURE**

ITEM DESCRIPTION: SIDE TABLE

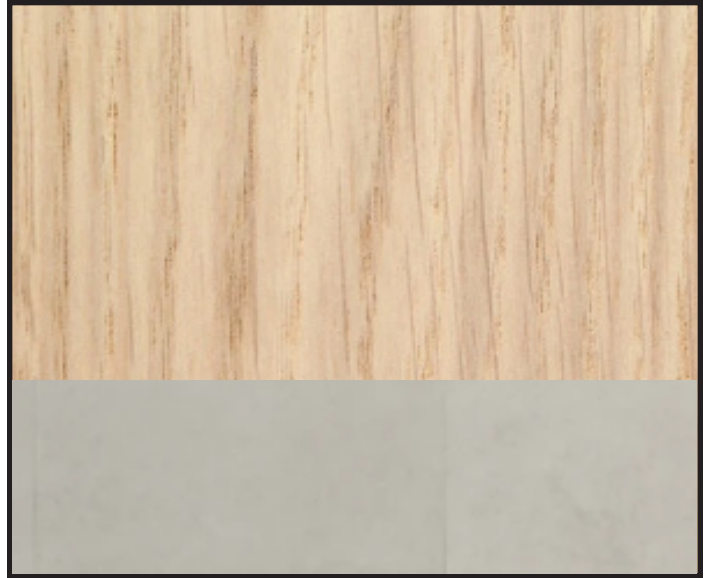
MANUFACTURER: ANDREU WORLD

PRODUCT NAME/NUMBER: REVERSE OCCASIONAL  
WOOD / ME5643

ITEM DESCRIPTION: ROUND OCCASIONAL TABLE W/  
SOLID CENTRAL BASE, TECHNICAL STONE AT THE CENTER  
OF THE TOP

DIMENSIONS: 17.75"H x 17.75"DIAM

COMMENTS:

**FINISHES**

FINISHES:

SURFACE: ASH 306

SURFACE ACCENT: SAND GREY CEGA

BASE: ASH 306

COMMENTS:

**FURNITURE**

ITEM DESCRIPTION: COFFEE TABLE

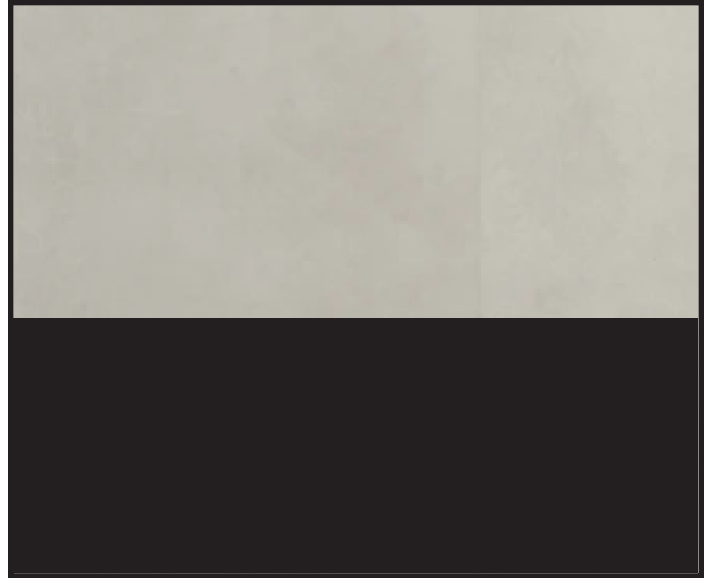
MANUFACTURER: ANDREU WORLD

PRODUCT NAME/NUMBER: REVERSE OCCASIONAL / ME5329

ITEM DESCRIPTION: ROUND COFFEE TABLE W/ SOLID CENTRAL BASE, TECHNICAL STONE TOP, PURE ECO THERMO-POLYMER BASE

DIMENSIONS: 13.75"H x 35.5"DIA

COMMENTS:

**FINISHES**

FINISHES:

SURFACE: SAND GREY CEGA

BASE: 6006

COMMENTS:



**FURNITURE**

ITEM DESCRIPTION: PICNIC TABLE

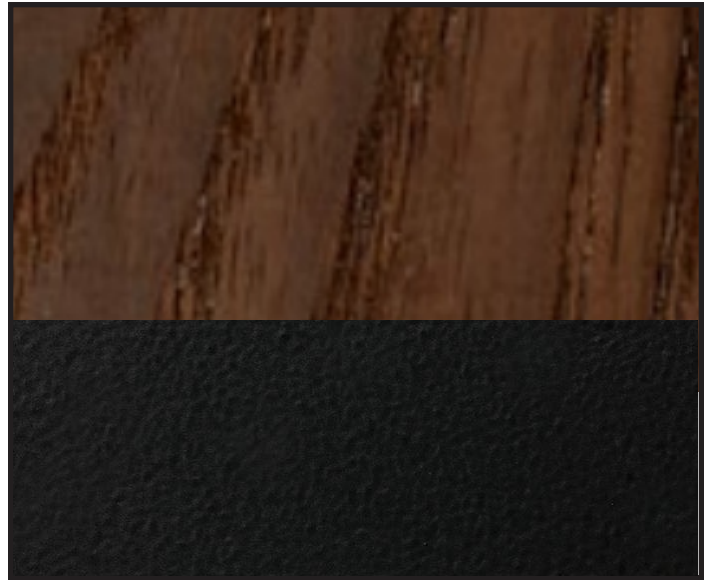
MANUFACTURER: LANDSCAPE FORMS

PRODUCT NAME/NUMBER: HARPO

ITEM DESCRIPTION: OUTDOOR RECTANGULAR TABLE,  
SURFACE MOUNTED, WOOD TOP, METAL LEGS

DIMENSIONS: 30.25"H x 69"W x 32.5"D

COMMENTS:

**FINISHES**

FINISHES:

SURFACE: DOMESTICALLY SOURCED THERMALLY  
MODIFIED ASH

LEGS: OBSIDIAN

COMMENTS:

# STORAGE

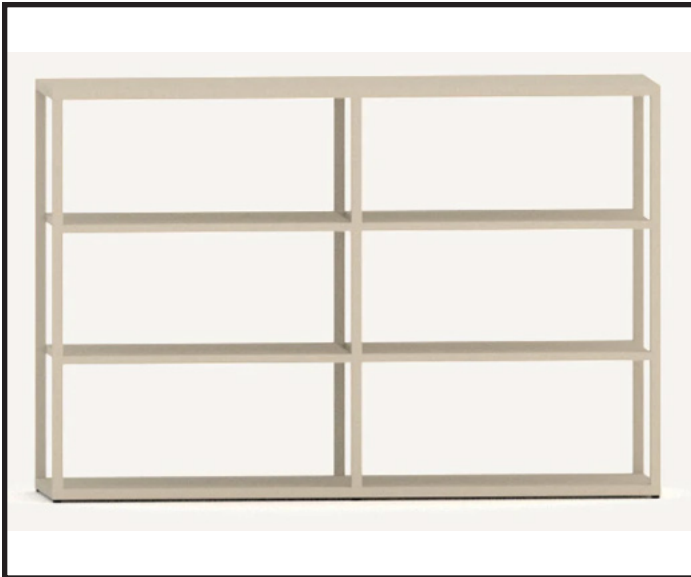
---

NAC # 411-22106

LUCAS COUNTY MHR SB - DANI'S PLACE

**NAC**  
ARCHITECTURE

**FURNITURE**



ITEM DESCRIPTION: BOOKCASE

MANUFACTURER: HIGHTOWER

PRODUCT NAME/NUMBER: DRY SHELVING / NDDR150

ITEM DESCRIPTION: OPEN SHELF STORAGE, ADJUSTABLE  
HEIGHT SHELVES, LEVELING GLIDES

DIMENSIONS: 46.7"H x 35.4"W x 19.7"D

COMMENTS:

OR EQUAL

**FINISHES**



FINISHES:

SURFACE: DARK VERDE POWDER COAT

COMMENTS:

**FURNITURE**

ITEM DESCRIPTION: CREDENZA

MANUFACTURER: ROUILLARD

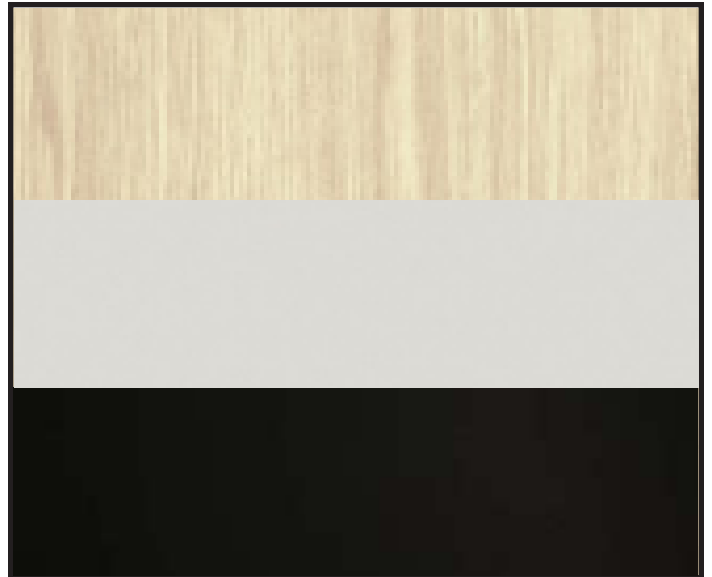
PRODUCT NAME/NUMBER: ZETTI CREDENZA / CZ3P

ITEM DESCRIPTION: LOW CREDENZA ON LEGS, LOCKABLE DOORS

DIMENSIONS: 29"H x 72"W x 20"D

COMMENTS:

OR EQUAL

**FINISHES**

FINISHES:

CHASSIS (FRAME): LAGO (K41)

FACADE (DOORS): GRAYSTONE (464-58) HPL

TOP: LAGO (K41)

LEGS: BLACK METAL (MN)

HANDLES: BLACK (N)

COMMENTS:

**FURNITURE**

ITEM DESCRIPTION: STAINLESS STEEL SERVICE CART

MANUFACTURER: ULINE

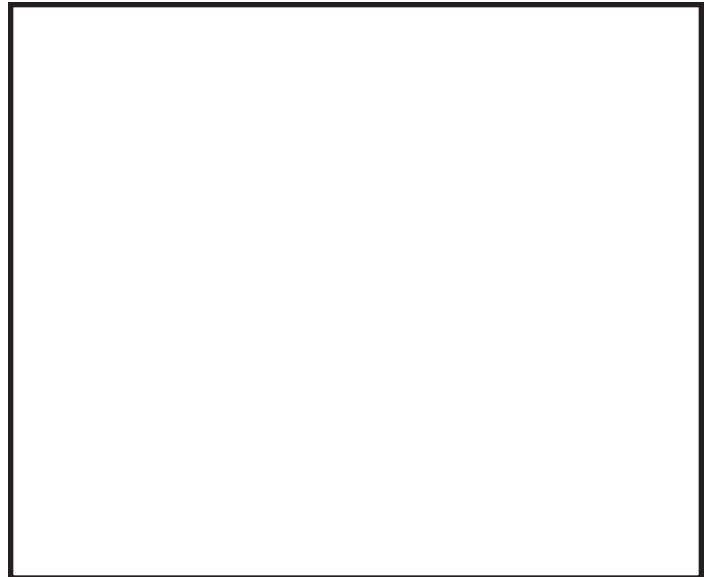
PRODUCT NAME/NUMBER: STAINLESS STEEL SERVICE  
CART / H-7491

ITEM DESCRIPTION: STAINLESS STEEL SERVICE CART,  
LOCKING CASTERS

DIMENSIONS: 33"H x 31"W x 19"D

COMMENTS:

OR EQUAL

**FINISHES**

FINISHES:

SURFACE: 430 STAINLESS STEEL

LEGS: 430 STAINLESS STEEL

COMMENTS:



**FURNITURE**

ITEM DESCRIPTION: LATERAL FILE

MANUFACTURER: KIMBALL

PRODUCT NAME/NUMBER: LF SERIES METAL FILING /  
LFF18304

ITEM DESCRIPTION: METAL FILING LATERAL FILES,  
STANDARD HEIGHT DRAWERS, LOCKABLE,  
COUNTERWEIGHT KIT LFCW30

DIMENSIONS: 48 11/6"H x 30"W x 18"D

**COMMENTS:**

SPECIFIC KEY (LATERAL FILES LOCATED WITHIN THE  
SAME OFFICE TO BE LOCKED W/ THE SAME KEY)

**OR EQUAL**

**FINISHES**

FINISHES:

SURFACE: TAUPE METALLIC 504

COMMENTS:

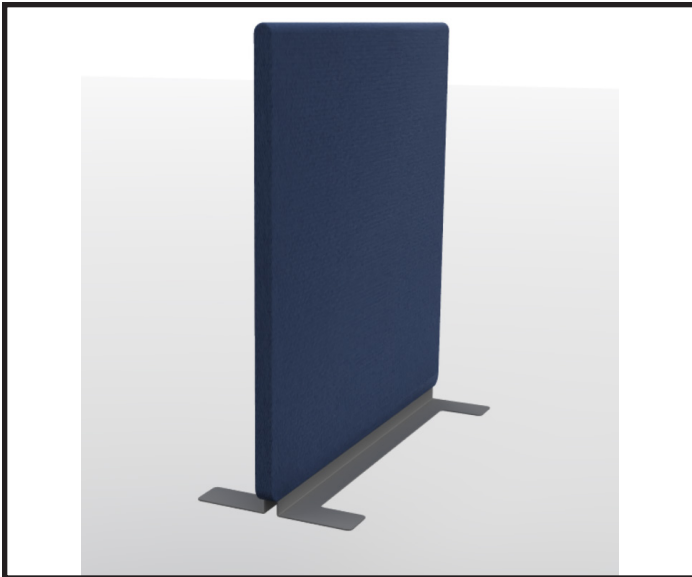
# MISCELLANEOUS

---

NAC # 411-22106

LUCAS COUNTY MHRB - DANI'S PLACE

**NAC**  
ARCHITECTURE

**FURNITURE**

ITEM DESCRIPTION: ACOUSTIC DESK PARTITION

MANUFACTURER: KIMBALL

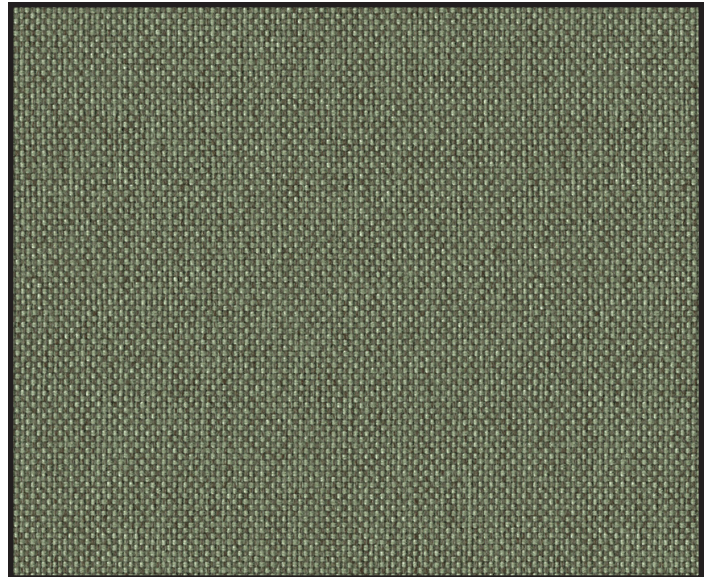
PRODUCT NAME/NUMBER: EVERYSpace SCREEN /  
35K1836CSFP

ITEM DESCRIPTION: ACOUSTIC DESK PARTITION,  
MOUNTED TO TOP OF WORKSURFACE WITH PRE-DRILLED  
HOLES AND TAMPER-PROOF MOUNTING HARDWARE

DIMENSIONS: 34 5/8"H x 17 5/8"W x 13"D

COMMENTS:

OR EQUAL

**FINISHES**

FINISHES:

SURFACE: UPH U

BASE: DARK BRONZE METALLIC (547)

COMMENTS:

**FURNITURE**

ITEM DESCRIPTION: DOUBLE BED & MATTRESS

MANUFACTURER: PINEAPPLE

PRODUCT NAME/NUMBER: ACUMEN BEDS / 1AUA  
TAURUS FOAM MATTRESS / 1TRM6-75-54

ITEM DESCRIPTION: DOUBLE BED W/ HEADBOARD,  
FLOOR FIXED FRAME, WALL-MOUNTED HEADBOARD,  
SMOOTH ROUNDED CORNERS. MATTRESS W/ HEAVY-  
DUTY ANTI-VANDAL COVER AND WATER-RESISTANT  
HEAT WELDED SEAMS

DIMENSIONS:

BED FRAME: 16.6"H x 78.8"W x 56.1"L

MATTRESS: 6"H x 75"W x 54"L

COMMENTS:

**FINISHES**

FINISHES:

SURFACE: HICKORY

COMMENTS:

**FURNITURE**

ITEM DESCRIPTION: THROW PILLOW

MANUFACTURER: PLURAL:

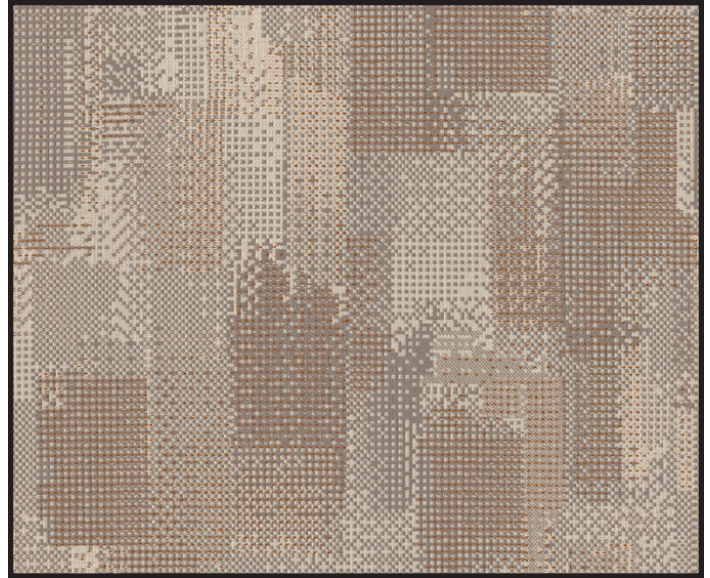
PRODUCT NAME/NUMBER: PILLOWS / PKE-2020

ITEM DESCRIPTION: THROW PILLOW W/ KNIFE EDGE,  
TRILLIUM FILL (HYPOALLERGENIC SYNTHETIC DOWN  
THAT DOESN'T PACK OR CRUSH), CONCEALED ZIPPER

DIMENSIONS: 20" x 20"

COMMENTS:

**OR EQUAL**

**FINISHES**

FINISHES:

FRAME: N/A

ARM: N/A

BACK: N/A

SEAT: N/A

SURFACE: UPH W

LEGS: N/A

COMMENTS:



**FURNITURE**

ITEM DESCRIPTION: THROW PILLOW

MANUFACTURER: PLURAL:

PRODUCT NAME/NUMBER: PILLOWS / PKE-2020

ITEM DESCRIPTION: THROW PILLOW W/ KNIFE EDGE,  
TRILLIUM FILL (HYPOALLERGENIC SYNTHETIC DOWN  
THAT DOESN'T PACK OR CRUSH), CONCEALED ZIPPER

DIMENSIONS: 20" x 20"

COMMENTS:

OR EQUAL

**FINISHES**

FINISHES:

FRAME: N/A

ARM: N/A

BACK: N/A

SEAT: N/A

SURFACE: UPH X

LEGS: N/A

COMMENTS:

**FURNITURE**

ITEM DESCRIPTION: THROW PILLOW

MANUFACTURER: PLURAL:

PRODUCT NAME/NUMBER: PILLOWS / PKE-2020

ITEM DESCRIPTION: THROW PILLOW W/ KNIFE EDGE,  
TRILLIUM FILL (HYPOALLERGENIC SYNTHETIC DOWN  
THAT DOESN'T PACK OR CRUSH), CONCEALED ZIPPER

DIMENSIONS: 20" x 20"

COMMENTS:

OR EQUAL

**FINISHES**

FINISHES:

FRAME: N/A

ARM: N/A

BACK: N/A

SEAT: N/A

SURFACE: UPH Y

LEGS: N/A

COMMENTS:

**FURNITURE**

ITEM DESCRIPTION: THROW PILLOW

MANUFACTURER: PLURAL:

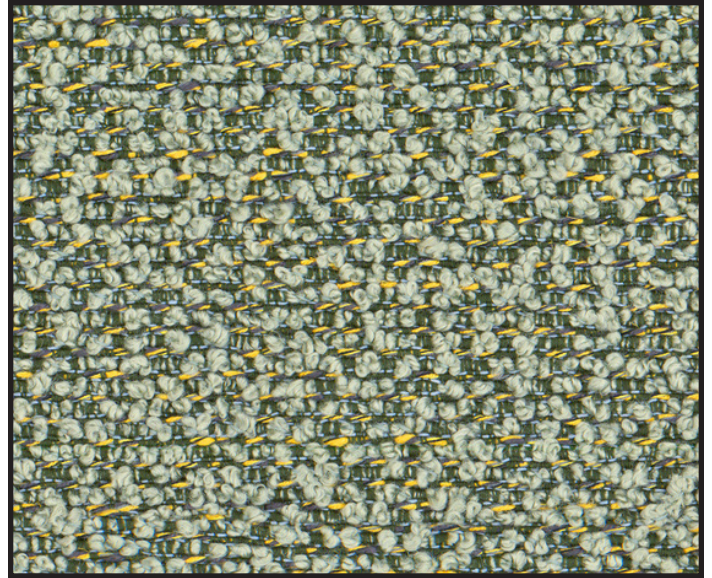
PRODUCT NAME/NUMBER: PILLOWS / PKE-2020

ITEM DESCRIPTION: THROW PILLOW W/ KNIFE EDGE,  
TRILLIUM FILL (HYPOALLERGENIC SYNTHETIC DOWN  
THAT DOESN'T PACK OR CRUSH), CONCEALED ZIPPER

DIMENSIONS: 20" x 20"

COMMENTS:

OR EQUAL

**FINISHES**

FINISHES:

FRAME: N/A

ARM: N/A

BACK: N/A

SEAT: N/A

SURFACE: UPH Z

LEGS: N/A

COMMENTS:



## FURNITURE



ITEM DESCRIPTION: THROW PILLOW

MANUFACTURER: PLURAL:

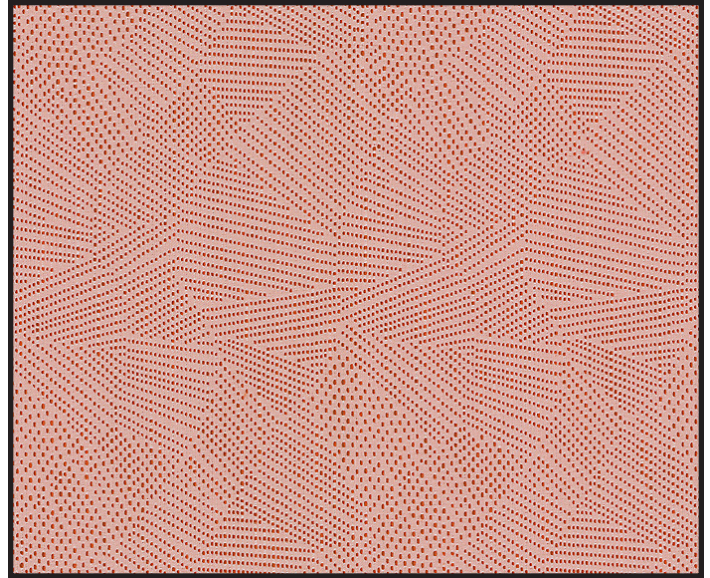
PRODUCT NAME/NUMBER: PILLOWS / PKE-2020

ITEM DESCRIPTION: THROW PILLOW W/ KNIFE EDGE,  
TRILLIUM FILL (HYPOALLERGENIC SYNTHETIC DOWN  
THAT DOESN'T PACK OR CRUSH), CONCEALED ZIPPER

DIMENSIONS: 20" x 20"

COMMENTS:  
**OR EQUAL**

## FINISHES



FINISHES:

FRAME: N/A

ARM: N/A

BACK: N/A

SEAT: N/A

SURFACE: UPH AA

LEGS: N/A

COMMENTS:

**FURNITURE**

ITEM DESCRIPTION: THROW PILLOW

MANUFACTURER: PLURAL:

PRODUCT NAME/NUMBER: PILLOWS / PKE-2020

ITEM DESCRIPTION: THROW PILLOW W/ KNIFE EDGE,  
TRILLIUM FILL (HYPOALLERGENIC SYNTHETIC DOWN  
THAT DOESN'T PACK OR CRUSH), CONCEALED ZIPPER

DIMENSIONS: 20" x 20"

COMMENTS:

OR EQUAL

**FINISHES**

FINISHES:

FRAME: N/A

ARM: N/A

BACK: N/A

SEAT: N/A

SURFACE: UPH BB

LEGS: N/A

COMMENTS: